



4.4

# 35C08-20 TYPE

## Check Valve

Rated pressure (bar / psi)	240 / 3500
Peak flow (L/min / gpm)	See performance chart

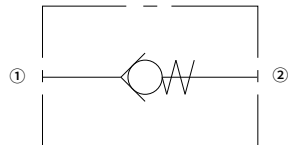
### Features

- Hardened parts for long life and low leakage
- Optional bias springs for back-pressure application flexibility
- Fully guided check assembly
- Compact size
- Fast closing and seating

### Contents

Description	02
Operation	02
Ordering code	02
Materials	02
Technical data	03
Performance	03
Dimensions	04

### Symbol



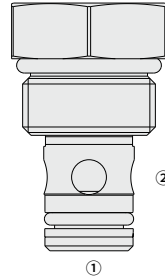
## Description

A screw-in, cartridge-style, hydraulic check valve for use as a blocking or load-holding device.

## Operation

The valve allows flow passage from ① to ②, while normally blocking oil flow in the opposite direction.

The cartridge has a fully guided check which is spring-biased closed until sufficient pressure is applied at ① to open to ②.



## Ordering Code

	35C08-20	<input type="checkbox"/>	-	<input type="checkbox"/>	-	<input type="checkbox"/>	-	<input type="checkbox"/>	<input type="checkbox"/>	<input type="checkbox"/>	
<b>Option:</b>	None	Blank		0							
	150 $\mu$ Screen	S									
<b>Cartridge Only</b>											
<b>Seals:</b>	Buna N (Std. )							N			
	Polyurethane							P			
	Fluorocarbon							V			
									<b>Bias Spring:</b>		
									0.3 bar (4 psi)	4	
									0.5 bar (7 psi)	7	
									0.7 bar (10 psi)	10	
									1.7 bar (25 psi)	25	
									4.1 bar (60 psi)	60	
									6.9 bar (100 psi)	100	
									10.3 bar (150 psi)	150	

## Materials

### Cartridge:

Weight: 0.05 kg; Steel with hardened work surfaces. Zinc-plated exposed surfaces; Buna N (Std. ) seal.

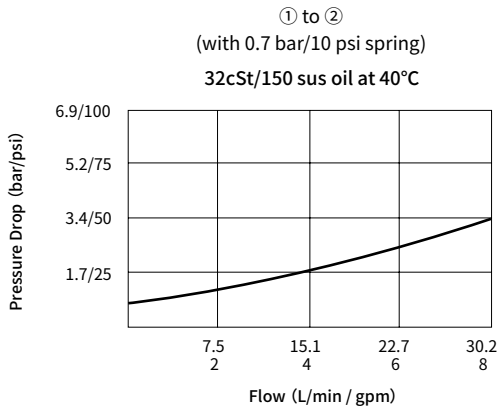
### Standard Ported Body:

Anodized high-strength aluminum alloy, rated to 240 bar; Ductile iron and steel bodies available; Dimensions may differ, consult factory.

## Technical Data

Rated pressure	240 bar (3500 psi)
Proof pressure	350 bar (5075 psi)
Peak flow	See performance chart
Crack Pressure Defined	Gauge bar evident at ① at 16.4 mL/min attained
Standard bias springs at crack	0.3 bar、0.7 bar、6.9 bar
Cavity	VC08-2 (See technical reference)
Internal leakage	≤ 0.1 mL/min (2 drops/min) @240 bar
Fluid	Mineral-based or synthetics with lubricating properties
Viscosity range	7.4 to 420 mm <sup>2</sup> /s
Temperature range	-40 to 100 °C (Buna N seals)
	-54 to 107 °C (Polyurethane seals)
	-26 to 204 °C (Fluorocarbon seals)
Degree of fluid contamination	The minimum pollution level is ISO4406 level 18/16/13, and level 15/13/11 is recommended to prolong the service life

## Performance (Cartridge Only)



## Dimensions

( Dimensions in mm )

