



4.5

# 35PC08-30 TYPE

## Check, Pilot-to-Open

Rated pressure (bar / psi)	240 / 3500
Peak flow (L/min / gpm)	See performance chart

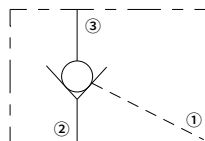
### Features

- Hardened parts for long life and low leakage
- Optional sealed piston
- Optional spring ranges
- Compact size

### Contents

Description	02
Operation	02
Ordering code	02
Materials	02
Technical data	03
Performance	03
Dimensions	04

### Symbol



# Description

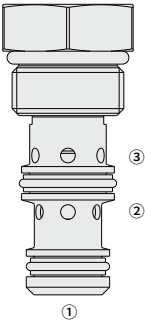
A screw-in, cartridge-style, pilot-operated, hydraulic check valve for use in blocking or load-holding circuits.

# Operation

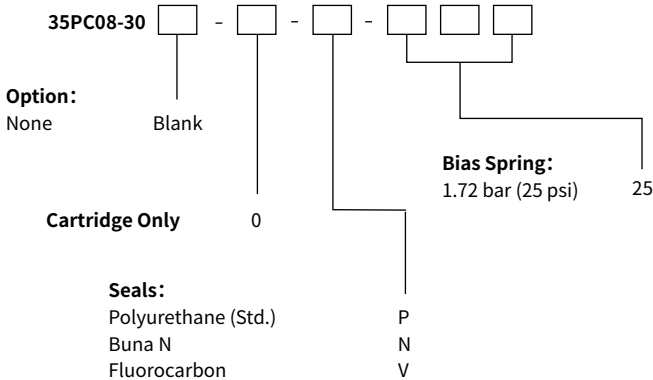
The valve allows flow from ② to ① , while normally blocking flow from ③ to ② . Flow will be allowed from ③ to ② when sufficient pressure is applied at ① .

The cartridge has a 3:1 pilot ratio, meaning that at least one-third of the load pressure held at ③ is required at 1 to open the valve.

The check is spring-biased to assure holding in static or no-load conditions. A sealed pilot piston option is available.



# Ordering Code



# Materials

## Cartridge:

Weight: 0.07 kg; Steel with hardened work surfaces. Zinc-plated exposed surfaces; Polyurethane (Std. ) seal.

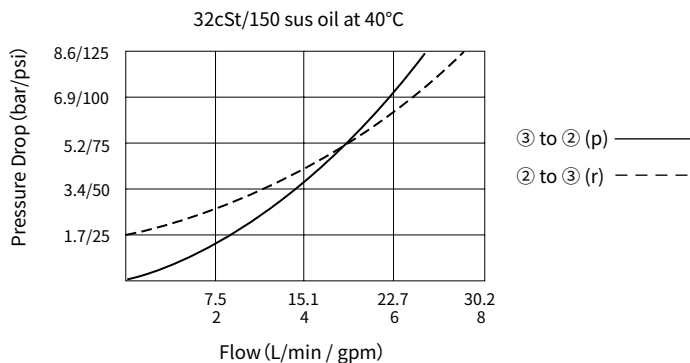
## Standard Ported Body:

Anodized high-strength aluminum alloy, rated to 240 bar; Ductile iron and steel bodies available; Dimensions may differ, consult factory.

## Technical Data

Rated pressure	240 bar (3500 psi)
Peak flow	See performance chart
Internal leakage	③ to ② : $\leq 0.25$ mL/min (5 drops/min) @ 240 bar ② to ① without sealed piston: $\leq 115$ mL/min (7 cu.in./min) @ 240 bar ② to ① with sealed piston: zero leakage
Pilot ratio	3:1
Check spring bias	1.72 bar (25 psi) standard; With sealed piston option: $\geq 6.2$ bar (90 psi)
Cavity	VC08-3
Fluid	Mineral-based or synthetics with lubricating properties
Viscosity range	7.4 to 420 mm <sup>2</sup> /s
Temperature range	-54 to 107 °C (Polyurethane seals)
	-40 to 100 °C (Buna N seals)
	-26 to 204 °C (Fluorocarbon seals)
Degree of fluid contamination	The minimum pollution level is ISO4406 level 18/16/13, and level 15/13/11 is recommended to prolong the service life

## Performance (Cartridge Only)



Dimensions

( Dimensions in mm )

