



4.6

50PC12-S31 TYPE

Check, Pilot-to-Open

Rated pressure (bar / psi)	350 / 5000
Peak flow (L/min / gpm)	See performance chart

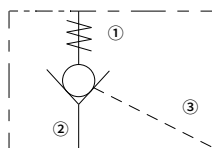
Features

- Hardened parts for long life and low leakage
- Optional sealed piston
- High working pressure
- Compact size

Contents

Description	02
Operation	02
Ordering code	02
Materials	02
Technical data	03
Performance	03
Dimensions	04

Symbol



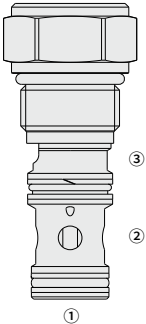
Description

A cartridge-style Pilot to open, poppet-type check valve.

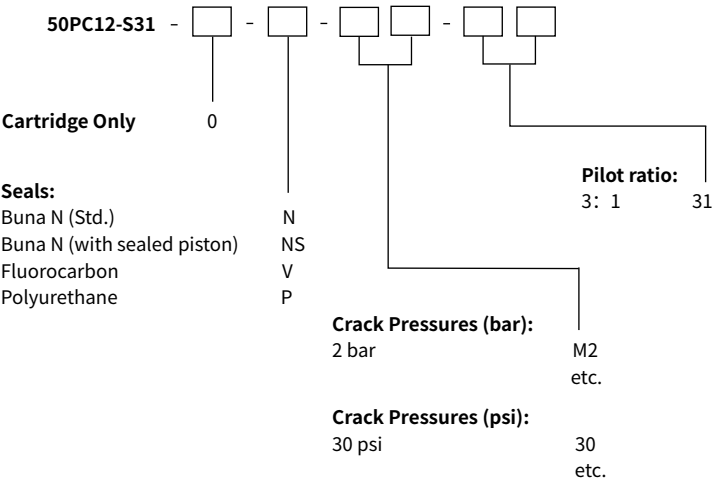
Operation

The valve allows flow from ② to ① , while normally blocking flow from ① to ② . Flow will be allowed from ① to ② when sufficient pressure is applied at ③ .

The cartridge has a 3:1 pilot ratio, meaning that at least one-third of the load pressure held at ① is required at ③ to open the valve.



Ordering Code



Materials

Cartridge:

Weight: 0.3 kg; Steel with hardened work surfaces. Zinc-plated exposed surfaces; Buna N (Std.) seal.

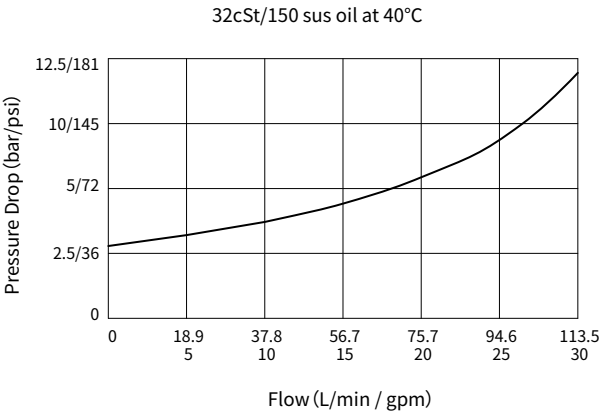
Standard Ported Body:

Anodized high-strength aluminum alloy, rated to 240 bar; Ductile iron and steel bodies available; Dimensions may differ, consult factory.

Technical Data

Rated pressure	350 bar (5000 psi)
Peak flow	See performance chart
Internal leakage	≤ 5 drops/min @ 350 bar
Pilot ratio	3:1
Cavity	VC12-S3
Fluid	Mineral-based or synthetics with lubricating properties
Viscosity range	7.4 to 420 mm ² /s
Temperature range	-40 to 100 °C (Buna N seals)
	-26 to 204 °C (Fluorocarbon seals)
	-54 to 107 °C (Polyurethane seals)
Degree of fluid contamination	The minimum pollution level is ISO4406 level 18/16/13, and level 15/13/11 is recommended to prolong the service life

Performance (Cartridge Only)



Dimensions

(Dimensions in mm)

