



4.2

# 60C10 TYPE

## Check Valve

Max. pressure (bar / psi) 420 / 6091

Peak flow (L/min / gpm) 80 / 21

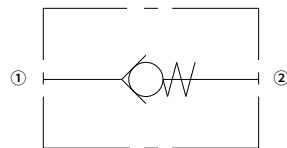
### Features

- All external surfaces are zinc plated and corrosion-proof
- Optional bias springs for back-pressure application flexibility
- Industry common cavity
- Hardened parts for long life and low leakage

### Contents

Description	02
Operation	02
Ordering code	02
Materials	02
Technical data	03
Performance	03
Dimensions	04

### Symbol



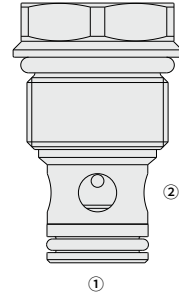
## Description

A screw-in, cartridge style, direct acting, poppet type check valve.  
Main use is as a blocking or load-holding device.

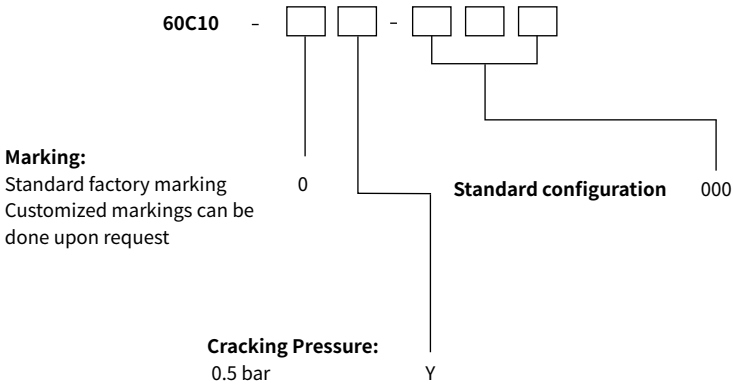
## Operation

The valve allows flow passage from port ① to ② : the cartridge has a fully guided check which is spring-biased closed until sufficient pressure is applied at port ① to open to ② .

The flow is blocked in the opposite direction ( ② to ① ).



## Ordering Code



## Materials

### Cartridge:

Weight: 0.08 kg ; Steel with hardened work surfaces. Zinc-plated exposed surfaces;  
Buna N (Std. ) seal.

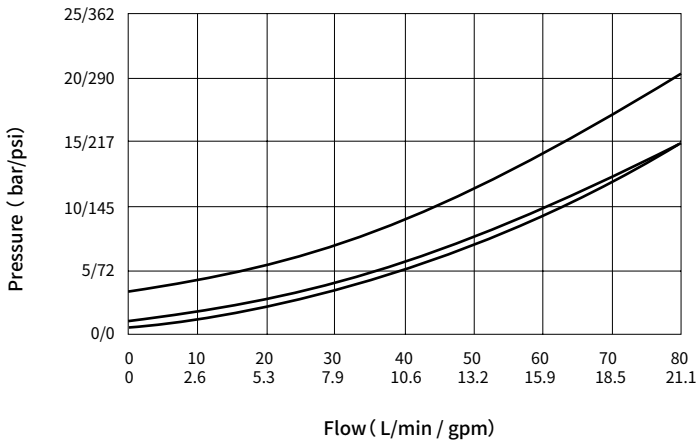
### Standard Ported Body:

Anodized high-strength aluminum alloy, rated to 240 bar; Ductile iron and steel bodies available;  
Dimensions may differ, consult factory.

## Technical Data

Max. pressure	420 bar (6091 psi)
Peak flow	80 L/min (21 gpm)
Cracking pressure	See ordering code
Cavity	VC10-2
Internal leakage	≤ 0.1 mL/min @ 420 bar
Fluid	Mineral-based or synthetics with lubricating properties
Viscosity range	7.4 to 420 mm <sup>2</sup> /s
Temperature	-40 to 100 °C (Buna N seals)
Degree of fluid contamination	The minimum pollution level is ISO4406 level 18/16/13, and level 15/13/11 is recommended to prolong the service life

## Performance (Cartridge Only)



## Dimensions

(Dimensions in mm)

