



4.3

# HLCVD0-G TYPE

## Check Valve

Max. pressure (bar / psi)	350 / 5000
Peak flow (L/min / gpm)	80 / 21 (G12 Type) 50 / 13 (G38 Type)

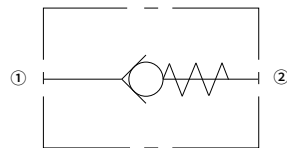
### Features

- Suitable for heavy duty applications
- Extremely compact size
- Industry common cavity
- Hardened parts for long life and low leakage

### Contents

Description	02
Operation	02
Ordering code	02
Materials	02
Technical data	03
Performance	03
Dimensions	04

### Symbol



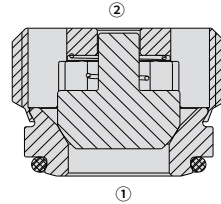
## Description

A screw-in, cartridge style, direct acting, poppet type check valve. Main use is as a blocking or load-holding device.

## Operation

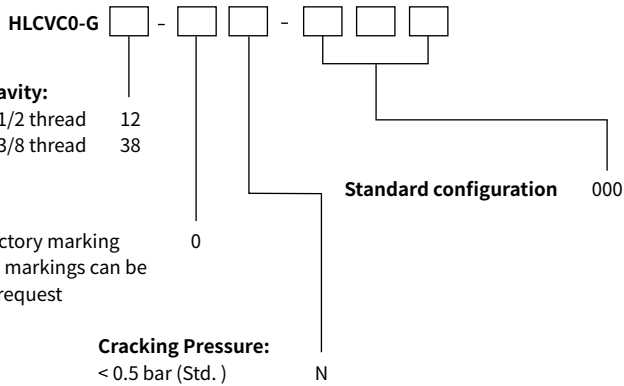
The valve allows flow passage from port ① to ② : the cartridge has a fully guided check which is spring-biased closed until sufficient pressure is applied at port ① to open to ② .

The flow is blocked in the opposite direction ( ② to ① ).



HLCVD0-G12

## Ordering Code



## Materials

### Cartridge:

Weight: 0.02 kg (G12) / 0.01 kg (G38) ; Steel with hardened work surfaces. Zinc-plated exposed surfaces;

Buna N (Std. ) seal.

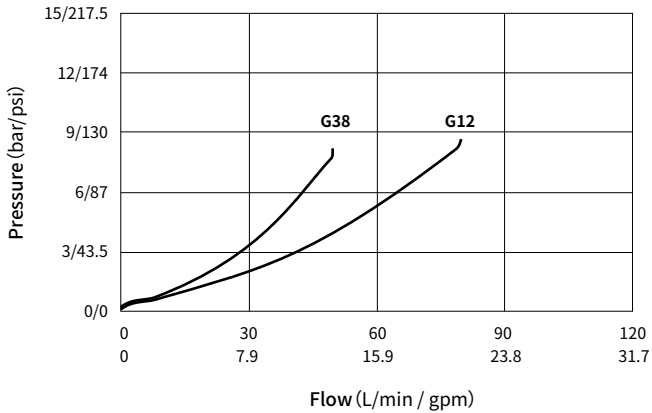
### Standard Ported Body:

Anodized high-strength aluminum alloy, rated to 240 bar; Ductile iron and steel bodies available; Dimensions may differ, consult factory.

## Technical Data

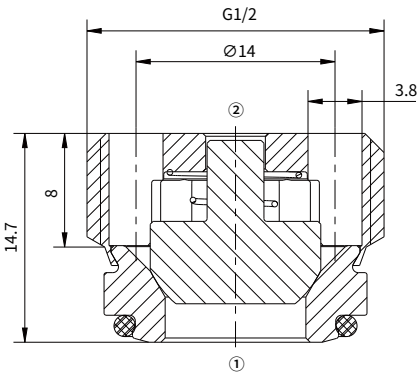
Max. pressure		350 bar (5000 psi)
Peak flow	HLCVD0-G12	80 L/min (21 gpm)
	HLCVD0-G38	50 L/min (13 gpm)
Cracking pressure		< 0.5 bar
Internal leakage		≤ 0.1 mL/min @ 350 bar
Fluid		Mineral-based or synthetics with lubricating properties
Viscosity range		7.4 to 420 mm <sup>2</sup> /s
Temperature		-40 to 100 °C (Buna N seals)
Degree of fluid contamination		The minimum pollution level is ISO4406 level 18/16/13, and level 15/13/11 is recommended to prolong the service life

## Performance (Cartridge Only)

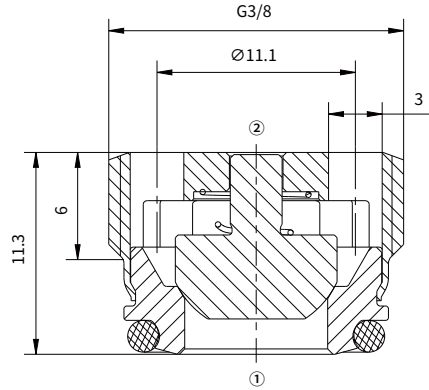


## Dimensions

(Dimensions in mm)



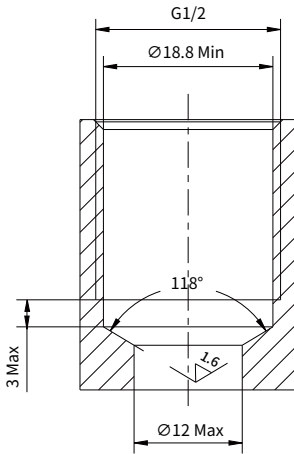
**HLCVD0-G12**



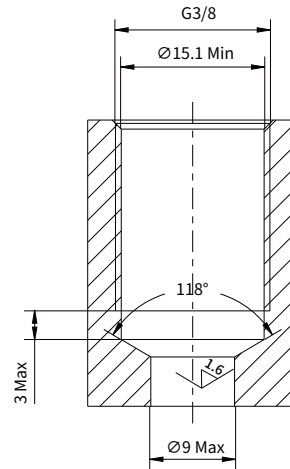
**HLCVD0-G38**

## Cavity dimensions

(Dimensions in mm)



**HLCVD0-G12**



**HLCVD0-G38**