



5.2

30F10-30F TYPE

Regulator, Pressure-Compensated

Rated pressure (bar / psi) 207 / 3000

Rated flow (L/min / gpm) 37.8 / 10

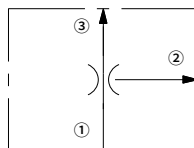
Features

- Hardened parts for long life
- Quiet, modulated response
- Industry common cavity

Contents

Description	02
Operation	02
Ordering code	02
Technical data	03
Performance	03
Materials	03
Dimensions	04

Symbol



Description

A screw-in, cartridge-style, pressure-compensated, non-adjustable flow regulator, intended for use in fixed displacement hydraulic circuits requiring partial pump flow diversion on a priority basis.

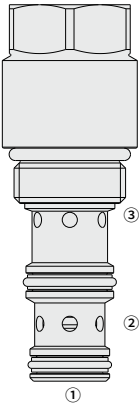
Operation

The valve maintains a constant flow rate from ③ regardless of load pressure changes in the system downstream of ③ , or in the bypass leg at ② .

The valve' s spool maintains a constant differential pressure of 6.5 bar (95 psi) across a fixed internal orifice, thereby regulating the hydraulic flow rate from ① to ③ .

The valve is a priority type regulator, delivering the pump flow to ③ first, then bypassing excess to ② . All ports may be fully pressurized.

Flow out of priority port ③ may vary based on input flow amount, particularly with lower temperatures and increased fluid viscosities. Settings may need to be established through correlation study. Consult factory.



Ordering Code

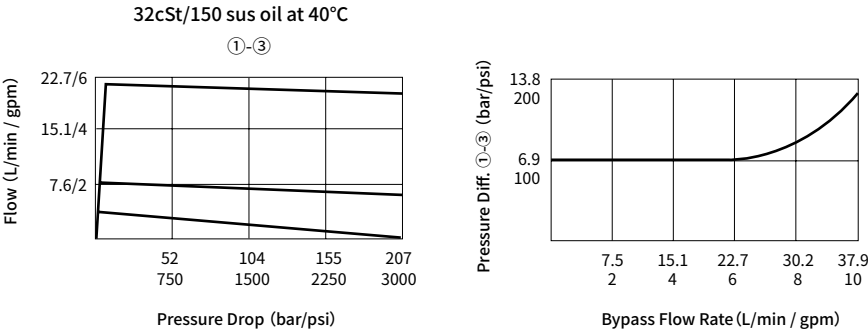
30F10-30F			-		-		- /					
		Option:		Blank				Priority Flow				
		None						Setting in L/min				
								Range: 0.38 to 22.7 L/min				
								Specify, for example:				
								1.8 L/min				M1.8
								2.5 L/min				M2.5
								5.0 L/min				M5.0
												etc.
		Cartridge only		0				Priority Flow				
								Drill Size Method				
		Seals:						In thousandths of an inch;				
		Buna N (Std.)				N		Specify, for example:				
		Polyurethane				P		0.030 in. control orifice hole				D030
		Fluorocarbon				V						etc.

Note: Minimum drill diameter is 0.020 in.
For smaller orifice sizes consult factory.

Technical Data

Rated pressure	207 bar (3000 psi)
Rated flow	37.8 L/min (10 gpm)
Control differential pressure	6.5 bar (preset pressure)
Flow maintenance setting range	0.4 ~ 5.9 L/min ±15% 6 ~ 22.7 L/min ±10%
Cavity	VC10-3
Fluid	Mineral-based or synthetics with lubricating properties
Viscosity range	7.4 to 420 mm ² /s
Temperature range	-40 to 100 °C (Buna N seals)
	-26 to 204 °C (Fluorocarbon seals)
	-54 to 107 °C (Polyurethane seals)
Degree of fluid contamination	The minimum pollution level is ISO4406 level 20/18/14, and level 17/15/13 is recommended to prolong the service life

Performance (Cartridge Only)



Materials

Cartridge:

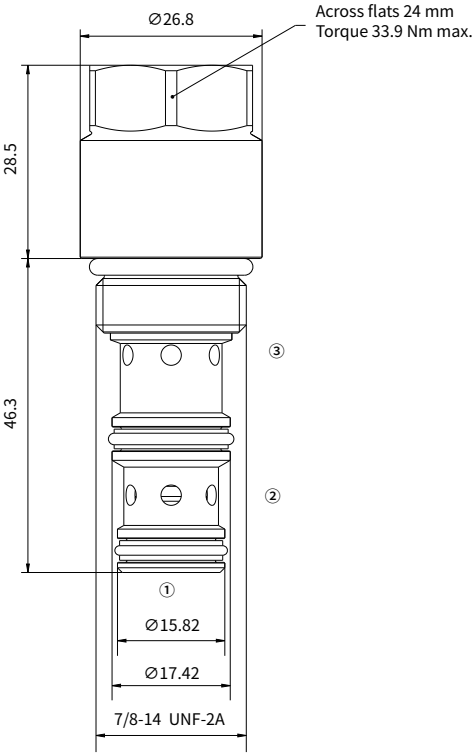
Weight: 0.30 kg; Steel with hardened work surfaces. Zinc-plated exposed surfaces; Buna N (Std.) seal.

Standard Ported Body:

Anodized high-strength aluminum alloy, rated to 240 bar; Ductile iron and steel bodies available; Dimensions may differ, consult factory.

Dimensions

(Dimensions in mm)



* Orifice disc should not be used with this product