

6.8

# 30LB10-30 TYPE Pressure Compensator

Rated pressure (bar / psi)	207 / 3000
Max. regulated flow (L/min / gpm)	30.3 / 8

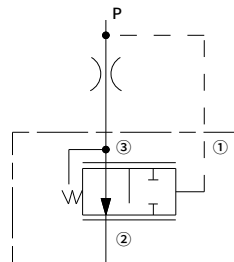
## Features

- Hardened parts for long life
- Quiet, modulated response
- Industry common cavity

## Contents

Description	02
Operation	02
Ordering code	02
Materials	02
Technical data	03
Performance	03
Dimensions	04

## Symbol

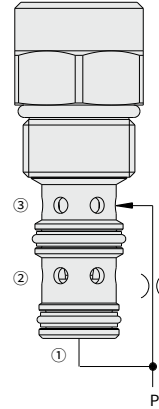


## Description

A screw-in, cartridge-style pressure-compensating element, intended for use with a remote fixed or variable orifice to yield a two-port-type, pressure-compensated, flow regulating hydraulic valve.

## Operation

The valve maintains a constant flow rate from ② regardless of load pressure changes in the circuit downstream of ②. The cartridge maintains a constant differential pressure from circuit point P to port ③, thereby regulating the hydraulic flow rate between the twopoints in the circuit.



## Ordering Code

30LB10-30	-	-	-	-	
	Option:				
	None	Blank			
	Cartridge only	0			
	Seals:				
	Polyurethane (Std.)			P	
	Buna N			N	
	Fluorocarbon			V	
	Compensator Spring:				
	2.8 bar (40psi)				40
	5.5 bar (80psi), Std.				80
	11.0 bar (160psi)				160

## Materials

### Cartridge:

Weight: 0.13 kg; Steel with hardened work surfaces. Zinc-plated exposed surfaces; Polyurethane (Std. ) seal.

### Standard Ported Body:

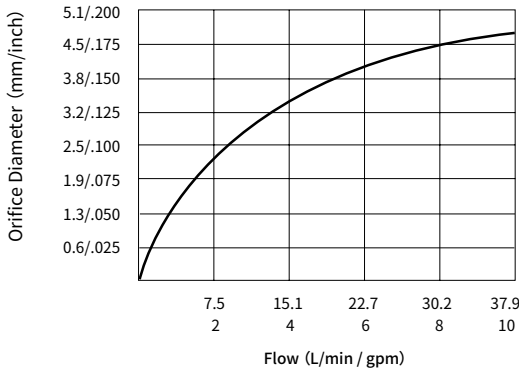
Anodized high-strength aluminum alloy, rated to 240 bar; Ductile iron and steel bodies available; Dimensions may differ, consult factory.

## Technical Data

Rated pressure	207 bar (3000 psi)
Max. regulated flow	30.3 L/min (8 gpm)
Standard compensator bias spring	5.5 bar (80 psi)
Flow maintenance	±10% from 0.38 to 38 L/min at pressures from 5.5 to 207 bar
Cavity	VC10-3
Fluid	Mineral-based or synthetics with lubricating properties
Viscosity range	7.4 to 420 mm <sup>2</sup> /s
Temperature range	-54 to 107 °C (Polyurethane seals)
	-40 to 100 °C (Buna N seals)
	-26 to 204 °C (Fluorocarbon seals)
Degree of fluid contamination	The minimum pollution level is ISO4406 level 20/18/14, and level 17/15/13 is recommended to prolong the service life

## Performance (Cartridge Only)

Output Flow vs. Orifice Dia.  
with 80 psi Spring  
32 cSt/150 sus oil at 40°C



## Dimensions

( Dimensions in mm )

