

6.4

# 35L08-30 TYPE

## Load Shuttle, Ball-Type

Rated pressure (bar / psi)	240 / 3500
Rated flow (L/min / gpm)	See performance chart

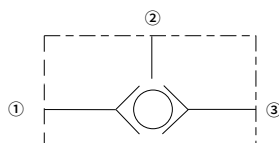
### Features

- Rapid response to load direction changes
- Compact size

### Contents

Description	02
Operation	02
Ordering code	02
Materials	02
Technical data	03
Performance	03
Dimensions	04

### Symbol



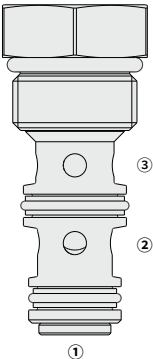
## Description

A load-shuttling, screw-in, cartridge-style hydraulic check valve, for use in blocking circuits where a priority of flow/direction is given to a higher pressure circuit over a lower one.

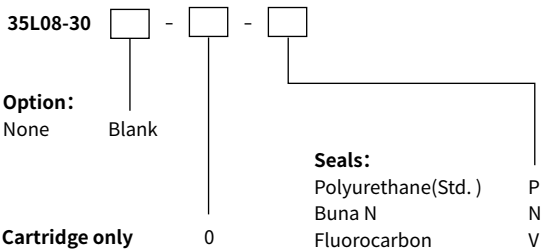
## Operation

The 35L08-30 will allow flow from the higher pressure of ① or ③ port to the ② port.

The valve is commonly used to direct oil from the pressure side of a bidirectional hydraulic motor to a pressure-released hydraulic brake.



## Ordering Code



## Materials

### Cartridge:

Weight: 0.07 kg; Steel with hardened work surfaces. Zinc-plated exposed surfaces; Polyurethane (Std. ) seal.

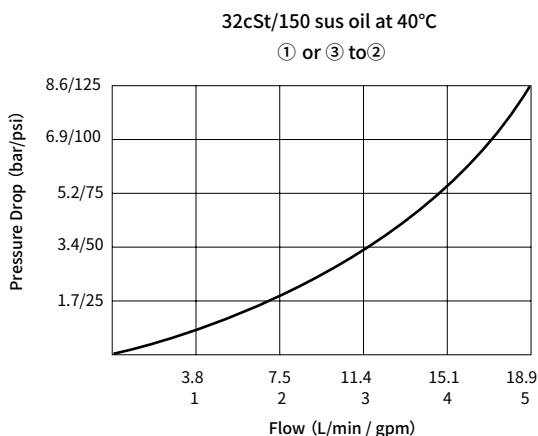
### Standard Ported Body:

Anodized high-strength aluminum alloy, rated to 240 bar; Ductile iron and steel bodies available; Dimensions may differ, consult factory.

## Technical Data

Rated pressure	240 bar (3500 psi)
Proof pressure	390 bar (5700 psi)
Rated flow	See performance chart
Internal leakage	≤ 5 drops/min @ 207bar
Cavity	VC08-3
Fluid	Mineral-based or synthetics with lubricating properties
Viscosity range	7.4 to 420 mm <sup>2</sup> /s
Temperature range	-54 to 107 °C (Polyurethane seals)
	-40 to 100 °C (Buna N seals)
	-26 to 204 °C (Fluorocarbon seals)
Degree of fluid contamination	The minimum pollution level is ISO4406 level 18/16/13, and level 15/13/11 is recommended to prolong the service life

## Performance (Cartridge Only)



Dimensions

( Dimensions in mm )

