

6.9

35LB10-42 TYPE Pressure Compensator

Rated pressure (bar / psi)	240 / 3500
Max. regulated flow (L/min / gpm)	See technical data

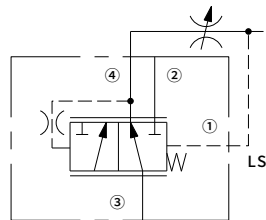
Features

- Hardened parts for long life
- Quiet, modulated response
- Industry common cavity

Contents

Description	02
Operation	02
Ordering code	02
Materials	02
Technical data	03
Performance	03
Dimensions	04

Symbol

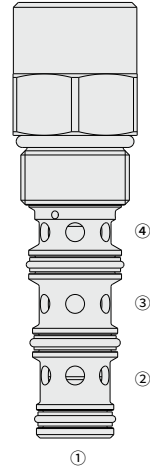


Description

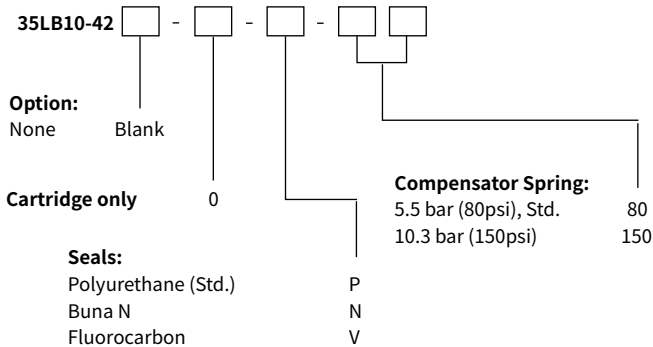
A screw-in, cartridge-style, priority-on-demand, pressure-compensator with a static load sense, intended to provide priority flow in the required amount, while allowing excess flow to be used for auxiliary functions.

Operation

With inlet flow at ③, the valve will deliver required priority flow at ④, regardless of load pressure. Excess flow exits at ②. Port ① is the load sense port.
All ports may be fully pressurized.



Ordering Code



Materials

Cartridge:

Weight: 0.17 kg; Steel with hardened work surfaces. Zinc-plated exposed surfaces; Polyurethane (Std.) seal.

Standard Ported Body:

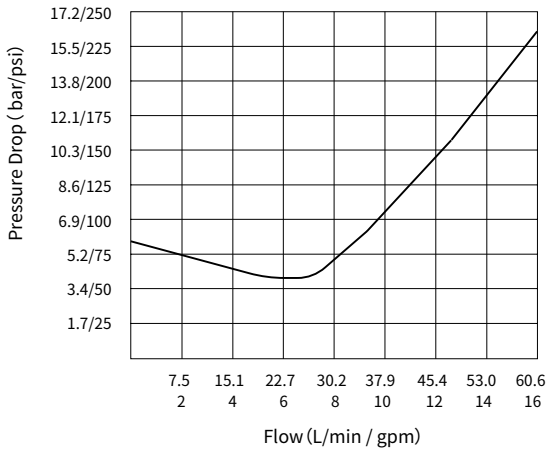
Anodized high-strength aluminum alloy, rated to 240 bar; Ductile iron and steel bodies available; Dimensions may differ, consult factory.

Technical Data

Rated pressure	240 bar (3500 psi)
Max. regulated flow	30.2 L/min (8.0 gpm) with 5.5 bar (80 psi) compensator spring
	37.9 L/min (10 gpm) with 10.3 bar (150 psi) compensator spring
Flow maintenance	See performance chart
Cavity	VC10-4
Fluid	Mineral-based or synthetics with lubricating properties
Viscosity range	7.4 to 420 mm ² /s
Temperature range	-54 to 107 °C (Polyurethane seals)
	-40 to 100 °C (Buna N seals)
	-26 to 204 °C (Fluorocarbon seals)
Degree of fluid contamination	The minimum pollution level is ISO4406 level 18/16/13, and level 15/13/11 is recommended to prolong the service life

Performance (Cartridge Only)

Pressure Drop vs. Inlet Flow
 ③ to ②; Port ④ closed; Port ② no load;
 150 psi Compensator Spring
 32 cSt/150 sus oil at 40°C



Dimensions

(Dimensions in mm)

