

6.11

35LB16-32 TYPE

Pressure Compensator

Features

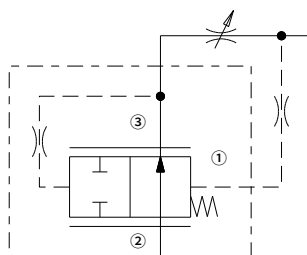
- Hardened parts for long life
- Quiet, modulated response
- Industry common cavity

Rated pressure (bar / psi)	241 / 3500
Max. regulated flow (L/min / gpm)	134 @ 80psi compensating spring 152 @ 160psi compensating spring

Contents

Description	02
Operation	02
Ordering code	02
Materials	02
Technical data	03
Performance	03
Dimensions	04

Symbol

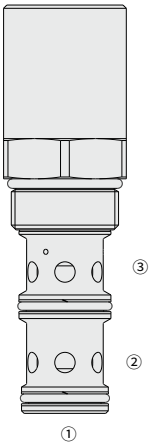


Description

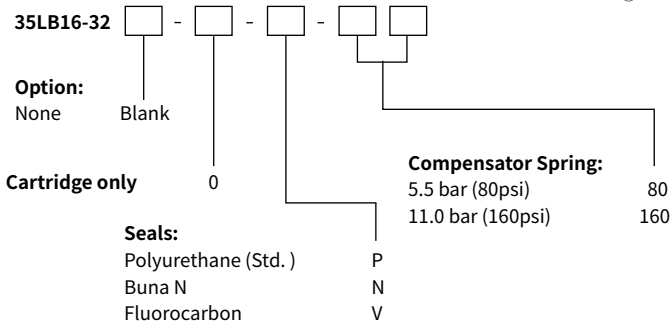
A screw-in, cartridge-style, load sense, flow-on-demand pressure-compensator.

Operation

With inlet flow at ② , the 35LB16-32 will deliver required flow at ③ , in response to load differential pressure sensed at ① .



Ordering Code



Materials

Cartridge:

Weight: 0.47 kg; Steel with hardened work surfaces. Zinc-plated exposed surfaces; Polyurethane (Std.) seal.

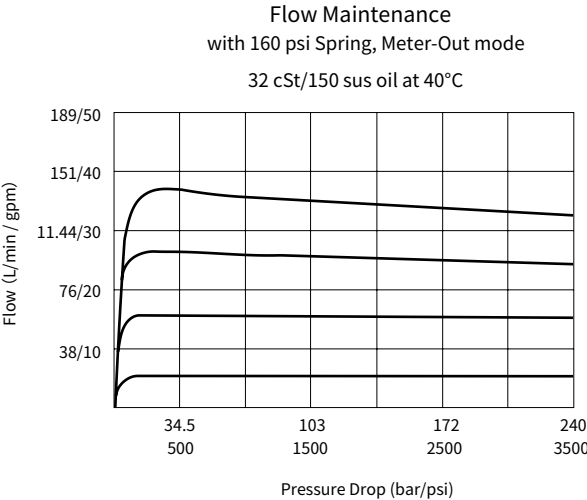
Standard Ported Body:

Anodized high-strength aluminum alloy, rated to 240 bar; Ductile iron and steel bodies available; Dimensions may differ, consult factory.

Technical Data

Rated pressure	241 bar(3500 psi)
Max. regulated flow	134 L/min(30 gpm) @ 80 psi compensating spring 152 L/min(40 gpm) @ 160 psi compensating spring
Flow maintenance	See performance chart
Cavity	VC16-3
Fluid	Mineral-based or synthetics with lubricating properties
Viscosity range	7.4 to 420 mm ² /s
Temperature range	-54 to 107 °C (Polyurethane seals)
	-40 to 100 °C (Buna N seals)
	-26 to 204 °C (Fluorocarbon seals)
Degree of fluid contamination	The minimum pollution level is ISO4406 level 18/16/13, and level 15/13/11 is recommended to prolong the service life

Performance (Cartridge Only)



Dimensions

(Dimensions in mm)

