



6.1

50L08-30 TYPE

Load Shuttle, Ball-type

Maximum pressure (bar / psi) 350 / 5000
 Peak flow (L/min / gpm) 10 / 2 (See performance chart)

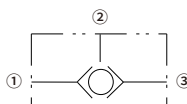
Features

- Hardened parts for long life
- Industry common cavity

Contents

Description	02
Operation	02
Ordering code	02
Materials	02
Technical data	03
Performance	03
Dimensions	04

Symbol

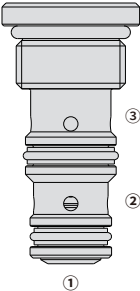


Description

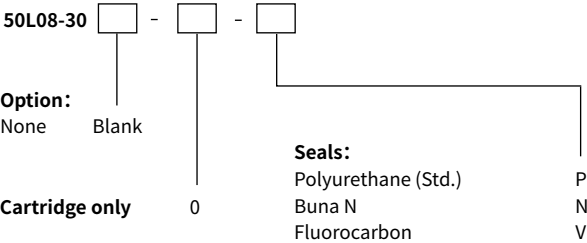
A load-shuttling, screw-in, cartridge-style hydraulic check valve, for use in blocking circuits where a priority of flow/direction is given to a higher pressure circuit over a lower one.

Operation

The single ball shuttle allows flow from the higher pressure of ① or ③ port to the ② port.



Ordering Code



Materials

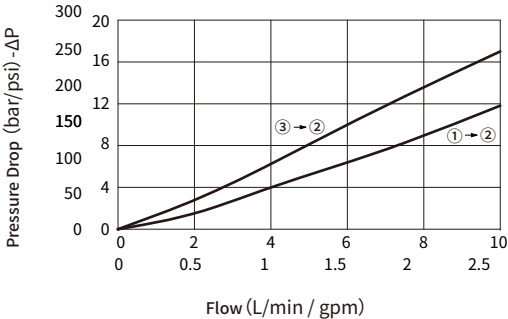
Cartridge:
Weight: 0.06 kg; Steel with hardened work surfaces. Zinc-plated exposed surfaces; Polyurethane (Std.) seal.

Standard Ported Body:
Anodized high-strength aluminum alloy, rated to 240 bar; Ductile iron and steel bodies available; Dimensions may differ, consult factory.

Technical Data

Maximum pressure	350 bar (5000 psi)
Peak flow	See performance chart
Internal leakage	≤ 15 drops/min
Cavity	VC08-3
Fluid	Mineral-based or synthetics with lubricating properties
Viscosity range	7.4 to 420 mm ² /s
Temperature range	-54 to 107 °C (Polyurethane seals)
	-40 to 100 °C (Buna N seals)
	-26 to 204 °C (Fluorocarbon seals)
Degree of fluid contamination	The minimum pollution level is ISO4406 level 18/16/13, and level 15/13/11 is recommended to prolong the service life

Performance (Cartridge Only)



Dimensions

(Dimensions in mm)

