

6.2

# 50L22M-44 TYPE

## Low Side (Hot Oil) Shuttle

Rated pressure (bar / psi) 350 / 5000  
Rated flow (L/min / gpm) 80 / 21 (@15 bar)

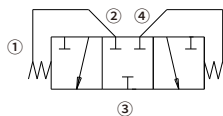
### Features

- Hardened parts for long life
- Industry common cavity

### Contents

Description	02
Operation	02
Ordering code	02
Materials	02
Technical data	03
Performance	03
Dimensions	04

### Symbol

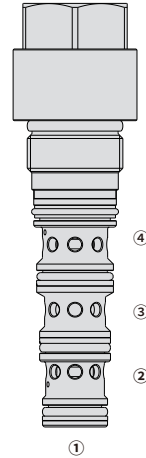


## Description

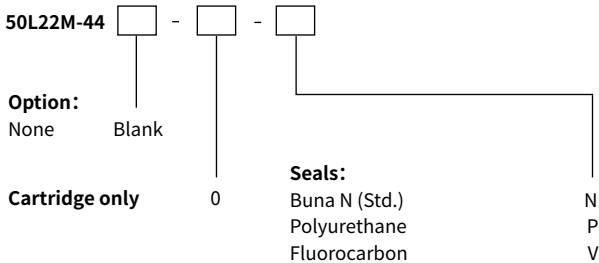
A spring-centered, spool-type, closed-in-neutral, 2-position, 3-way hot oil shuttle valve, which may be used on hydrostatic transmissions to direct charge pump oil to a heat exchanger or to tank.

## Operation

With internal piloting at port ①, ② or ④, the valve will direct oil from the port opposite of the piloted port to port ③, thus removing oil from the low-pressure side for cooling or filtration purposes. The valve has a spring-centered spool, and is closed in neutral position.



## Ordering Code



## Materials

### Cartridge:

Weight: 0.30 kg; Steel with hardened work surfaces. Zinc-plated exposed surfaces; Buna N (Std. ) seal.

### Standard Ported Body:

Anodized high-strength aluminum alloy, rated to 240 bar; Ductile iron and steel bodies available; Dimensions may differ, consult factory.

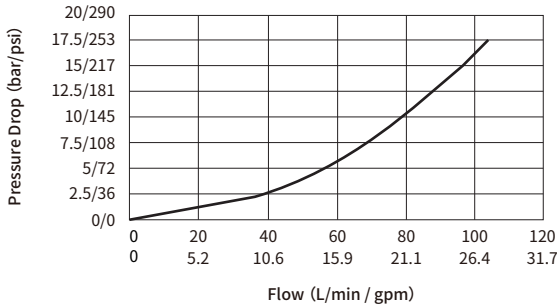
## Technical Data

Rated pressure	350 bar (5000 psi)
Rated flow	80 L/min (21 gpm) @15 bar
Torque	55~65 Nm
Cavity	VC-22M-4
Fluid	Mineral-based or synthetics with lubricating properties
Viscosity range	7.4 to 420 mm <sup>2</sup> /s
Temperature range	-40 to 100 °C (Buna N seals)
	-54 to 107 °C (Polyurethane seals)
	-26 to 204 °C (Fluorocarbon seals)
Degree of fluid contamination	The minimum pollution level is ISO4406 level 18/16/13, and level 15/13/11 is recommended to prolong the service life

## Performance (Cartridge Only)

32cSt/150 sus oil at 40°C

② to ③ and ④ to ③



# Dimensions

(Dimensions in mm)

