

6.5

50LA10-S35 TYPE

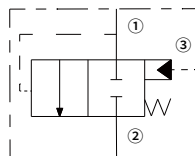
Piloted Spool-Type Logic Element

Features

- Multiple function/application potential
- Low pressure drop
- Industry common cavity

Contents

Description	02
Operation	02
Ordering code	02
Materials	02
Technical data	03
Performance	03
Dimensions	04

Symbol

Description

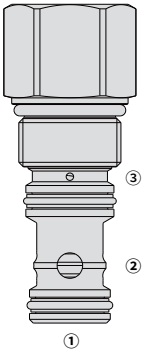
A spool-type, screw-in, cartridge-style, hydraulic directional element, with multifunction potential when used with other directional, pressure, or flow control devices.

Operation

The valve is a spring-biased blocking valve which will shift to allow full flow from ① to ② only when pressure at ① exceeds the cumulative pressure of ③ , plus the bias spring pressure value.

50LA10-S35 is a pilot-to-close directional valve.

With no pressure at ③ , flow will be allowed from ① to ② once the bias spring force is overcome with pressure at ① .



Ordering Code

50LA10-S35

-

-

-

Option:

None

Tall Cap

Blank

T

Cartridge only

0

Seals:

Polyurethane (Std.)

Buna N

Fluorocarbon

P

N

V

Bias Spring:

5.52 bar (80 psi)

11.0 bar (160 psi)

80

160*

Note: *T Option required

Materials

Cartridge:

Weight: 0.15 kg(without T), 0.32 kg(with T); Steel with hardened work surfaces. Zinc-plated exposed surfaces; Polyurethane (Std.) seal.

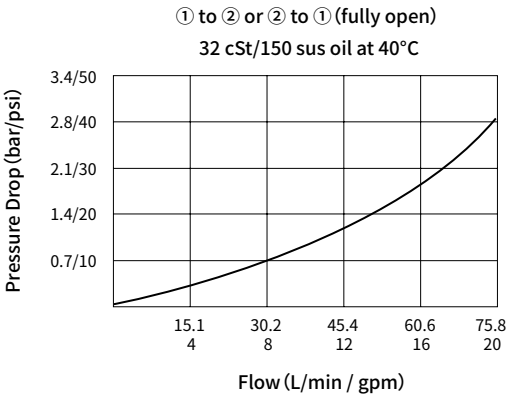
Standard Ported Body:

Anodized high-strength aluminum alloy, rated to 240 bar; Ductile iron and steel bodies available; Dimensions may differ, consult factory.

Technical Data

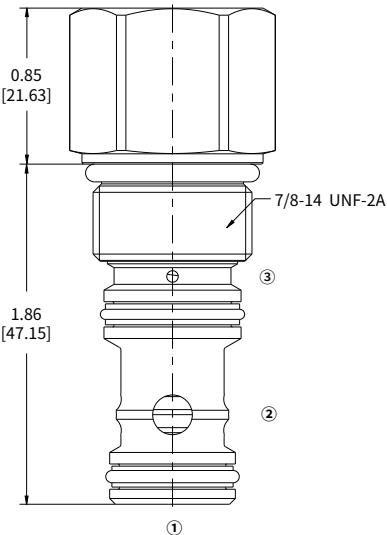
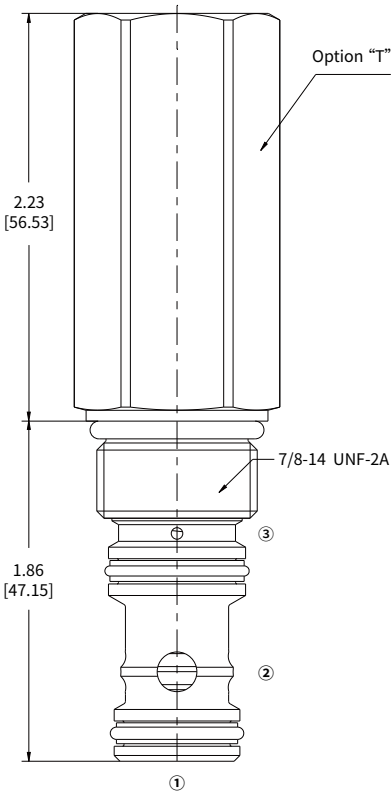
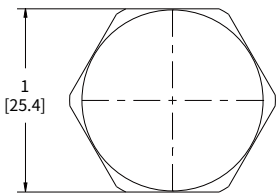
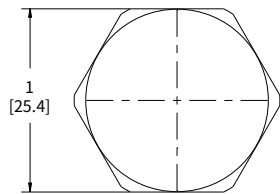
Rated pressure	350 bar (5000 psi)
Peak flow	See performance chart
Internal leakage	≤ 164 mL/min @ 207 bar
Cavity	VC10-S3 (See technical reference)
Fluid	Mineral-based or synthetics with lubricating properties
Viscosity range	7.4 to 420 mm ² /s
Temperature range	-54 to 107 °C (Polyurethane seals)
	-40 to 100 °C (Buna N seals)
	-26 to 204 °C (Fluorocarbon seals)
Degree of fluid contamination	The minimum pollution level is ISO4406 level 18/16/13, and level 15/13/11 is recommended to prolong the service life

Performance (Cartridge Only)



Dimensions

(Dimensions in mm)



INCH
MILLIMETER