



6.6

50LA10-S38 TYPE

Piloted Poppet-Type Logic Element

Maximum pressure (bar / psi)	350 / 5000
Peak flow (L/min / gpm)	80 / 21 (See performance chart)

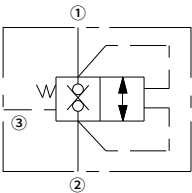
Features

- Multiple function/application potential
- Low pressure drop
- Industry common cavity

Contents

Description	02
Operation	02
Ordering code	02
Materials	02
Technical data	03
Performance	03
Dimensions	04

Symbol

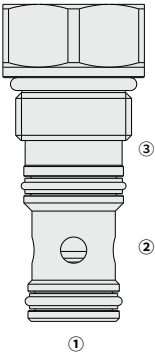


Description

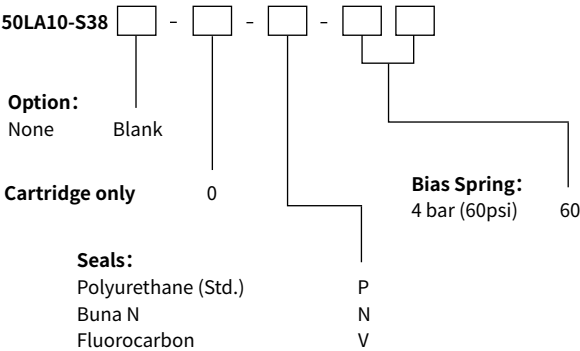
A poppet-type, screw-in, cartridge-style, hydraulic directional element, with multi-function potential when used with other directional, pressure, or flow control devices.

Operation

The valve is a spring-biased poppet valve which will block ① to ② or ② to ① until pressure at ① or ② exceeds the cumulative pressure at ③ and bias spring. With no pressure at ③ , flow will be allowed from ① to ② or ② to ① once the bias spring force is overcome with pressure at ① or ② . When the element is in closed state, the ratio of areas ① and ② is 1:1, and the ratio of areas ① or ② to ③ is 1:2.



Ordering Code



Materials

Cartridge:

Weight: 0.13 kg; Steel with hardened work surfaces. Zinc-plated exposed surfaces; Polyurethane (Std.) seal.

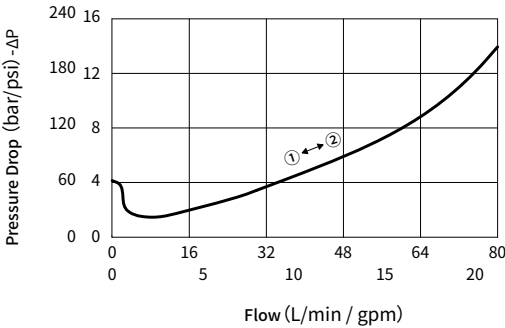
Standard Ported Body:

Anodized high-strength aluminum alloy, rated to 240 bar; Ductile iron and steel bodies available; Dimensions may differ, consult factory.

Technical Data

Maximum pressure	350 bar (5000 psi)
Peak flow	See performance chart
Internal leakage	≤ 5 drops/min @ 200bar
Pilot ratio	2:1
Cavity	VC10-S3
Bias spring	4 bar (60psi)
Fluid	Mineral-based or synthetics with lubricating properties
Viscosity range	7.4 to 420 mm ² /s
Temperature range	-54 to 107 °C (Polyurethane seals)
	-40 to 100 °C (Buna N seals)
	-26 to 204 °C (Fluorocarbon seals)
Degree of fluid contamination	The minimum pollution level is ISO4406 level 18/16/13, and level 15/13/11 is recommended to prolong the service life

Performance (Cartridge Only)



Dimensions

(Dimensions in mm)

