



3.8

30J10-32A TYPE

Pressure Reducing / Relieving Valve

Rated pressure (bar / psi)	207 / 3000
Peak flow (L/min / gpm)	30.2 / 8 (See performance chart)

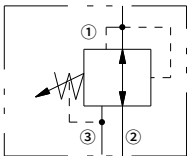
Features

- Adjustments cannot be backed out of the valve
- Adjustments prohibit springs from going solid
- Industry common cavity
- Optional spring ranges to 145 bar (2100 psi)
- Hardened parts for long life

Contents

Description	02
Operation	02
Ordering code	02
Materials	02
Technical data	03
Performance	03
Dimensions	04

Symbol



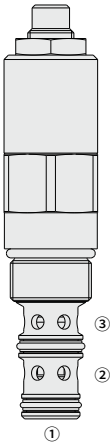
Description

A screw-in, cartridge-style, direct-acting, spool-type, hydraulic pressure reducing/relieving valve with internal pilot and internal spring chamber drain, designed to act as a pressure-regulating device for secondary circuits. It is intended for use in stable input flow circuits.

Operation

In its steady state, the 30J10-32A allows flow to pass bidirectionally from ② to ①, with the spring chamber constantly drained at ③.

On attainment of a pre-determined pressure at ①, the cartridge shifts to restrict input flow at ②, thereby regulating pressure at ①. In this mode, the valve will also relieve ① to ③ at approximately 10 bar (150 psi) over the reducing setting.



Ordering Code

30J10-32		A	-		-		-			/				
Option:														
1/4 in. Hex Allen Head		A												
Cartridge Only			0											
Seals:														
Polyurethane (Std.)			P											
Buna N			N											
Fluorocarbon			V											
Adjustment Range:														
5.5 ~ 27.6 bar														
(80 ~ 400 psi)														
13.8 ~ 55.2 bar														
(200 ~ 800 psi)														
20.7 ~ 103 bar														
(300 ~ 1500 psi)														
27.6 ~ 145 bar														
(400 ~ 2100 psi)														
Setting :														
for Adjustable or														
Specify,														Blank
Setting in bar,														
for example:														
25 bar														M25
100 bar														M100
Setting in psi,														
for example:														
900 psi														9
2350 psi														23.5

Materials

Cartridge:

Weight: 0.27 kg; Steel with hardened work surfaces. Zinc-plated exposed surfaces; Polyurethane (Std.) seal.

Standard Ported Body:

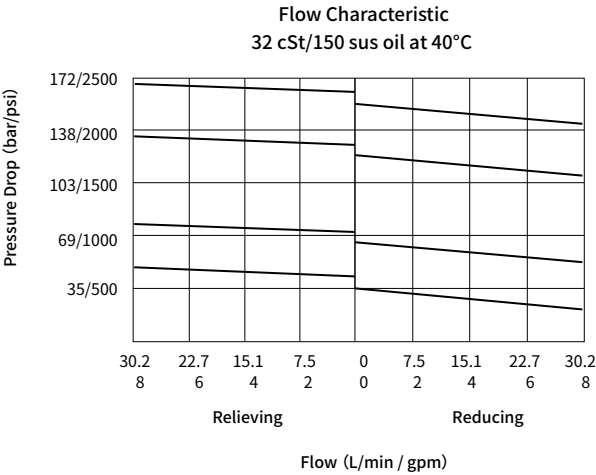
Anodized high-strength aluminum alloy, rated to 240 bar; Ductile iron and steel bodies available; Dimensions may differ, consult factory.

Technical Data

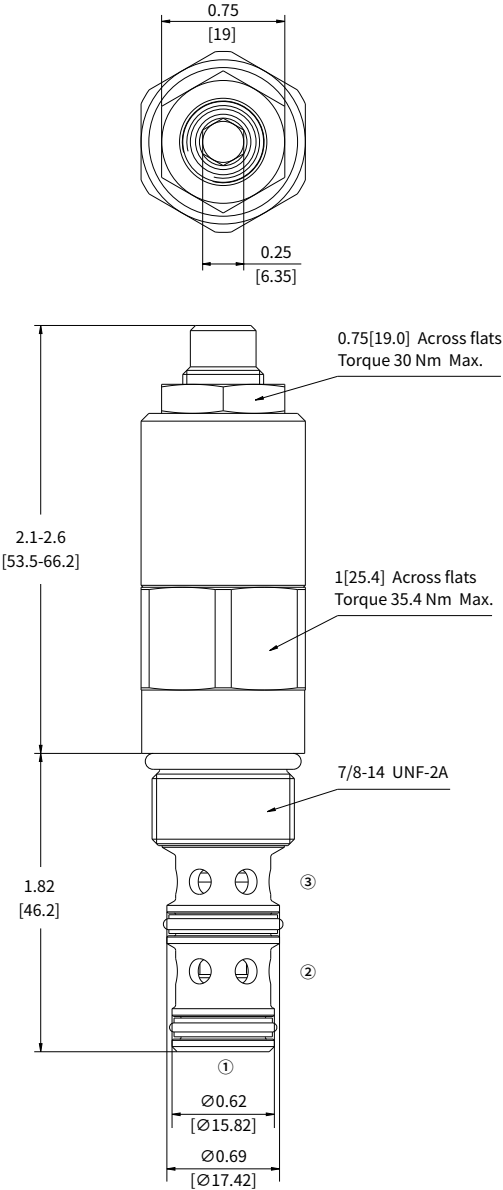
Rated pressure	207 bar (3000 psi)
Peak flow	See performance chart
Internal leakage (port ② to port ③)	≤ 82 mL/min @ 207 bar
Valve torque	32.6~35.4 Nm
Lock nut torque	25~30 Nm
Cavity	VC10-3 (See technical reference)
Fluid	Mineral-based or synthetics with lubricating properties
Viscosity range	7.4 to 420 mm ² /s
Temperature range	-54 to 107 °C (Polyurethane seals)
	-40 to 100 °C (Buna N seals)
	-26 to 204 °C (Fluorocarbon seals)
Degree of fluid contamination	The minimum pollution level is ISO4406 level 20/18/14, and level 17/15/13 is recommended to prolong the service life

03

Performance (Cartridge Only)



Dimensions



INCH
MILLIMETER