



3.5

# 36R08-22 TYPE

## Relief, Differential Area Poppet

Maximum pressure (bar / psi)	248 / 3600
Peak flow (L/min / gpm)	30.2 / 8

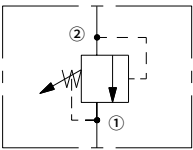
### Features

- Adjustments cannot be backed out of the valve
- Industry common cavity
- Hardened parts for long life

### Contents

Description	02
Operation	02
Ordering code	02
Materials	02
Technical data	03
Performance	03
Dimensions	04

### Symbol

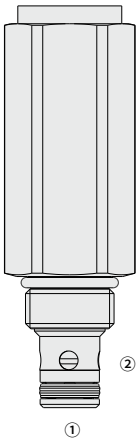


Description

A screw-in, cartridge-style, direct-acting, differential area, poppet-type hydraulic relief valve for use as a pressure limiting device in more demanding hydraulic circuits, requiring low hysteresis and low internal leakage.

Operation

The 36R08-22 blocks flow from ② to ① until sufficient pressure is present at ② to force the poppet from its seat. The cartridge offers smooth transition in response to load changes in common hydraulic circuits.



(\*HLRV08-22H diagram)

Ordering Code

**Option:**

1/4 in. hex allen head  
Factory preset non-adj  
Factory preset hidden adj

**Cartridge Only**

0

**Seals:**

Buna N (Std. )  
Polyurethane  
Fluorocarbon  
Fluorocarbon (pressure on P only)

**36R08-22**   -   -   -     /      

A  
F  
H

N  
P  
V  
VC

**Spring Range:**

3.4-27.6 bar	4
6.9-62.1 bar	7
6.9-117.2 bar	13
17.2-220.7 bar	26
17.2-248.3 bar	35

**Setting (bar):**  
for example:

25 bar	M25
100 bar	M100

Materials

**Cartridge:**  
Weight: 0.24 kg; Steel with hardened work surfaces. Zinc-plated exposed surfaces; Buna N (Std. ) seal.

**Standard Ported Body:**  
Anodized high-strength aluminum alloy, rated to 240 bar; Ductile iron and steel bodies available; Dimensions may differ, consult factory.

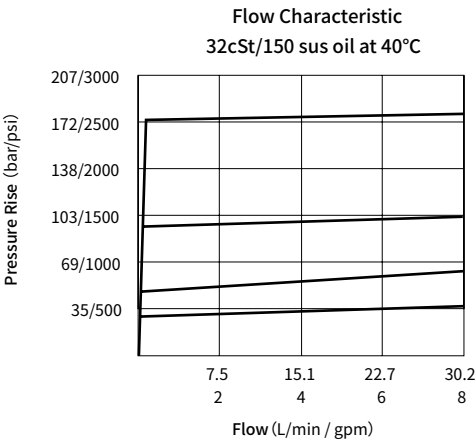
Technical Data

Maximum pressure	248 bar (3600 psi)
Peak flow	30.2 L/min (8 gpm)
Internal leakage	≤ 5 drops/min @ 85% of nominal setting
Crack pressure defined	bar (psi) evident at 0.95 L/min attained
Reseat pressure	Nominal 90% of crack pressure
Cavity	VC08-2
Fluid	Mineral-based or synthetics with lubricating properties
Viscosity range	7.4 to 420 mm <sup>2</sup> /s
Temperature range	-40 to 100 °C (Buna N seals)
	-54 to 107 °C (Polyurethane seals)
	-26 to 204 °C (Fluorocarbon seals)
Degree of fluid contamination	The minimum pollution level is ISO4406 level 18/16/13, and level 15/13/11 is recommended to prolong the service life

Spring Model Code	Nominal Factory Rating	Maximum Solid Adjustment
4	3.4 – 27.6 bar (50 – 400 psi)	41.4 bar (600 psi)
7	6.9 – 62.1 bar (100 – 900 psi)	89.7 bar (1300 psi)
13	6.9 – 117.2 bar (100 – 1700 psi)	158.6 bar (2300 psi)
26	17.2 – 220.7 bar (250 – 3200 psi)	275.9 bar (4000 psi)
35 <sup>1)</sup>	17.2 – 248.3 bar (250 – 3600 psi)	275.9 bar (4000 psi)

\*1) Spring Code 35 is available with factory pre-set (F and H) options only

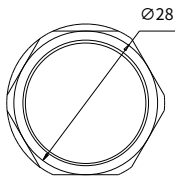
Performance (Cartridge Only)



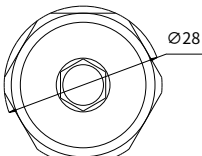
Dimensions

( Dimensions in mm )

Adjustment Option F



Adjustment Option H



Adjustment Option A

