



3.8

50J10-3AH TYPE

Pressure Reducing / Relieving Valve

Maximum pressure (bar / psi) 350 / 5000

Peak flow (L/min / gpm) 20 / 5

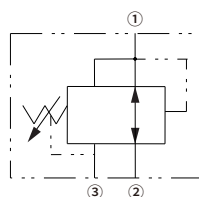
Features

- Adjustments cannot be backed out of the valve
- Industry common cavity
- Hardened parts for long life

Contents

Description	02
Operation	02
Ordering code	02
Materials	02
Technical data	03
Performance	03
Dimensions	04

Symbol

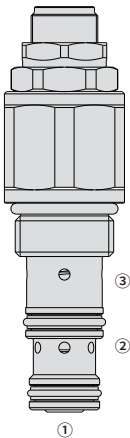


Description

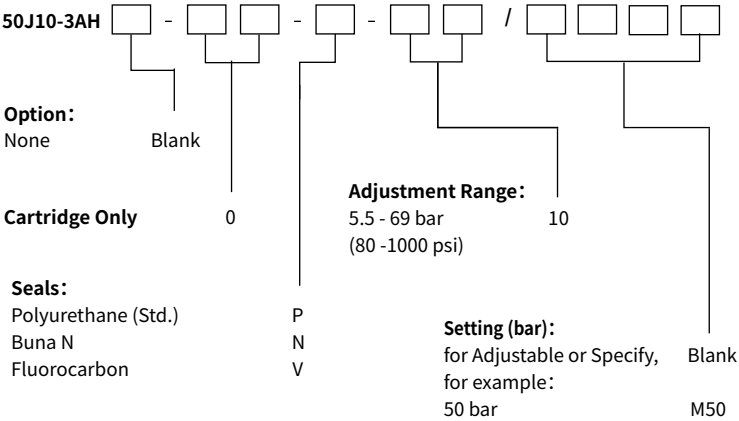
Pressure reducing and relieving, direct acting spool damped type, fixed setting.

Operation

Initially, flow passes freely from ② to ① . When the pressure at ① exceeds the pressure setting, the valve acts to restrict input flow at ② . This increases the pressure drop through the valve and maintains consistent pressure at ① . The spring chamber is drained at ③ to prevent a build-up of backpressure against the spool. Additionally, if pressure at ① rises above the pressure setting, flow is relieved to ③ until the setting is re-attained.



Ordering Code



Materials

Cartridge:

Weight: 0.30 kg; Steel with hardened work surfaces. Zinc-plated exposed surfaces; Polyurethane (Std.) seal.

Standard Ported Body:

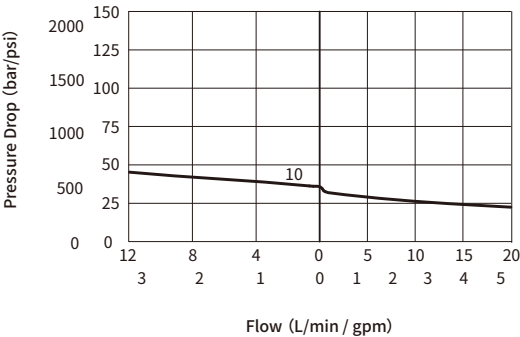
Anodized high-strength aluminum alloy, rated to 240 bar; Ductile iron and steel bodies available; Dimensions may differ, consult factory.

Technical Data

Maximum pressure	350 bar (5000 psi)
Peak flow	20 L/min (5 gpm)
Internal leakage	≤ 130 mL/min
Torque	41-47 Nm
Weight	0.3 kg
Cavity	VC10-3
Fluid	Mineral-based or synthetics with lubricating properties
Viscosity range	7.4 to 420 mm ² /s
Temperature range	-54 to 107 °C (Polyurethane seals)
	-40 to 100 °C (Buna N seals)
	-26 to 204 °C (Fluorocarbon seals)
Degree of fluid contamination	The minimum pollution level is ISO4406 level 18/16/13, and level 15/13/11 is recommended to prolong the service life

03

Performance (Cartridge Only)



Dimensions

(Dimensions in mm)

