



3.6

50R08-29X TYPE

Relief, Direct-Acting Poppet

Rated pressure (bar / psi)	350 / 5000
Peak flow (L/min / gpm)	1.9 / 0.5

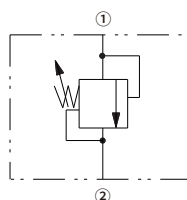
Features

- Adjustments cannot be backed out of the valve
- Optional spring ranges to 350 bar
- Smooth response to pressure surges
- Industry common cavity
- Hardened parts for long life

Contents

Description	02
Operation	02
Ordering code	02
Materials	02
Technical data	03
Performance	03
Dimensions	04

Symbol

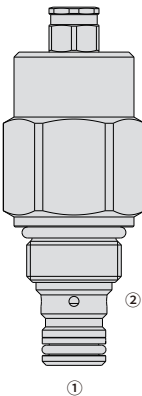


Description

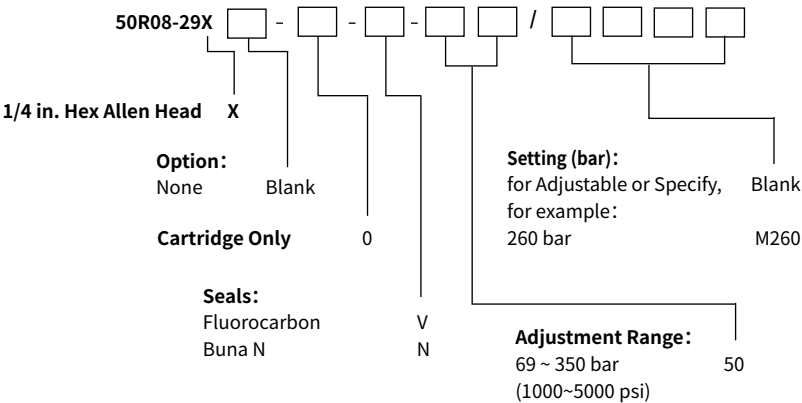
A screw-in, cartridge-style, direct-acting, poppet-type, hydraulic relief valve intended for stable function in very low flow circuits that control pilot-operated valves.

Operation

The valve blocks flow from ① to ② until sufficient pressure is present at ① to force the spring-opposed poppet from its seat.



Ordering Code



Materials

Cartridge:
Weight: 0.30 kg; Steel with hardened work surfaces. Zinc-plated exposed surfaces; Fluorocarbon / Buna N seal .

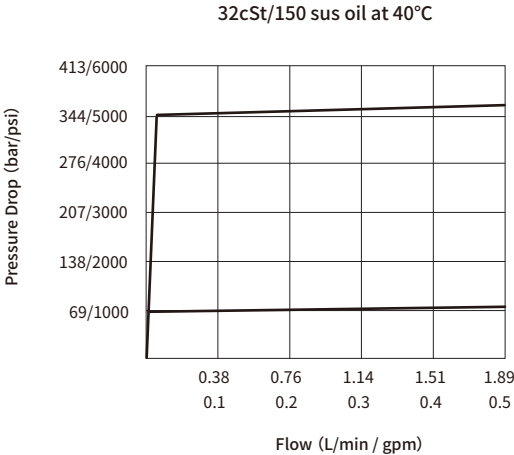
Standard Ported Body:
Anodized high-strength aluminum alloy, rated to 240 bar; Ductile iron and steel bodies available; Dimensions may differ, consult factory.

Technical Data

Rated pressure	350 bar (5000 psi)
Peak flow	1.9 L/min (0.5 gpm)
Internal leakage	3 mL/min max. to 80% of nominal setting
Crack pressure defined	bar evident at 0.95 L/min attained
Reseat pressure	Nominal 80% of crack pressure
Cavity	VC08-2
Fluid	Mineral-based or synthetics with lubricating properties
Viscosity range	7.4 to 420 mm ² /s
Temperature range	-26 to 204 °C (Fluorocarbon seals) -40 to 100 °C (Buna N seals)
Degree of fluid contamination	The minimum pollution level is ISO4406 level 18/16/13, and level 15/13/11 is recommended to prolong the service life

03

Performance (Cartridge Only)



Dimensions

(Dimensions in mm)

