



3.3

HRV0-M16 TYPE

Relief, Direct-Acting Poppet

Maximum pressure (bar / psi) 420 / 6000
Peak flow (L/min / gpm) 5 / 1.3

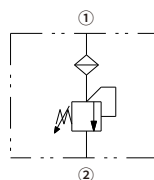
Features

- Adjustments cannot be backed out of the valve
- Industry common cavity
- Hardened parts for long life

Contents

Description	02
Operation	02
Ordering code	02
Materials	02
Technical data	03
Performance	03
Dimensions	04

Symbol

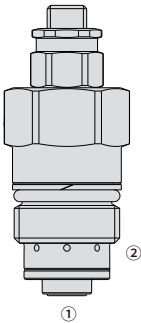


Description

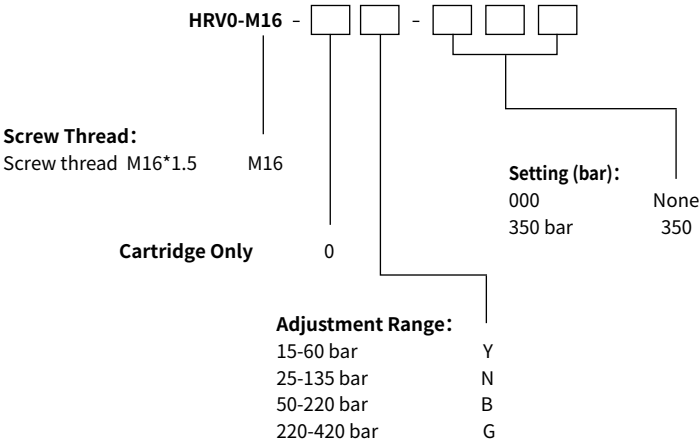
A screw-in, cartridge-style, direct-acting, poppet-type, hydraulic relief valve intended for stable function in pilot or thermal relief applications circuits.

Operation

Flow is blocked from ① to ② until pressure increases to meet the selected valve setting, lifting the poppet from its seat and allowing relief flow through ② to tank. Pressure at ② is additive to the relief setting of the valve.



Ordering Code



Materials

Cartridge:
Weight: 0.30 kg; Steel with hardened work surfaces. Zinc-plated exposed surfaces.

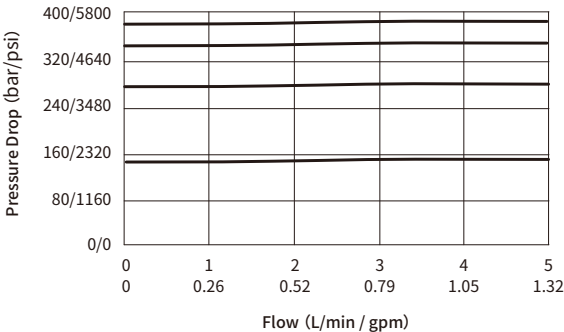
Standard Ported Body:
Anodized high-strength aluminum alloy, rated to 240 bar; Ductile iron and steel bodies available; Dimensions may differ, consult factory.

Technical Data

Maximum pressure	420 bar (6000 psi)
Peak flow	5 L/min (1.3 gpm)
Internal leakage	5 drops/min @ 80% of pressure setting
Pressure range change for one turn	Pressure increase 250 bar/turn
Installation torque	27-33 Nm
Fluid	Mineral-based or synthetics with lubricating properties
Viscosity range	7.4 to 420 mm ² /s
Temperature range	-40 to 100 °C
Degree of fluid contamination	The minimum pollution level is ISO4406 level 18/16/13, and level 15/13/11 is recommended to prolong the service life

03

Performance (Cartridge Only)



Dimensions

(Dimensions in mm)

