



1.37

KSE66-C0820-205 TYPE

Solenoid Directional Valve

Rated pressure (bar / psi)	350 / 5000
Peak flow (L/min / gpm)	40 / 10

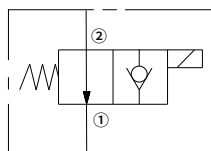
Features

- Continuous-duty rated coil
- Cartridges are voltage interchangeable
- Optional waterproof E-Coils rated up to IP69K
- Industry common cavity
- Hardened parts for long life

Contents

Description	02
Operation	02
Ordering code	02
Technical data	03
Performance	03
Dimensions	04

Symbol

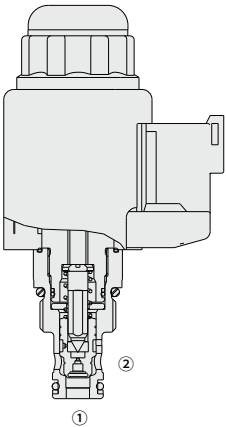


Description

High pressure, 2-way, normally open, piloted poppet-type

Operation

When de-energized, the valve allows flow from ② to ① . Flow from ① to ② is severely restricted in this mode.
When energized, the valve's poppet closes on its seat, blocking flow from ② to ① .
In this mode the cartridge will allow ① to ② flow after overcoming the solenoid force (requires 9 to 20 bar [130 to 290 psi]).



Ordering Code

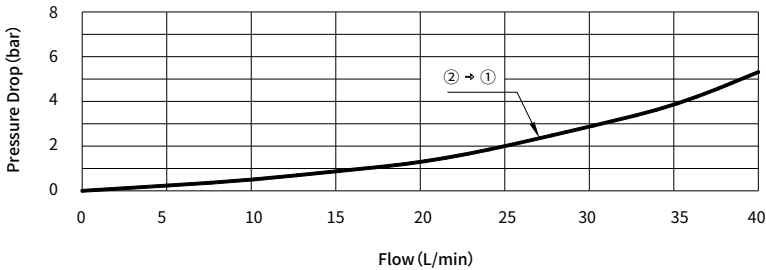
KSE66		C0820		205		L1X															
Cavity code																Porting size code					
Function code																					
Series L 1 0 - L 1 9				= L 1 X																	
Voltage:																					
D C 1 2 V				= G 1 2																	
D C 2 4 V				= G 2 4																	
*Special voltage consult factory																					
No code =				Without manual override																	
N =				With manual override																	

Technical Data

Rated pressure	350 bar (5075 psi)
Peak flow	40 L/min (10 gpm)
Internal leakage	$\leq 5 \text{ d / m i n}$
Coil duty rating	Continuous from 85% to 115% of nominal voltage
Initial coil current draw at 20°C	1.5 A at 12VDC; 0.8 A at 24VDC
Minimum pull-in voltage	85% of nominal at 207 bar
Cavity	VC08-2 (See technical reference)
weight	0.33 kg
Fluid	Mineral oil — Suitable for Buna N or Fluorocarbon seals
	Phosphate ester — Suitable for Fluorocarbon seals
Viscosity range	7.4 to 420 mm ² /s
Temperature range	- 30 to 80 (Buna N seals)
	- 20 to 80 (Fluorocarbon seals)
Degree of fluid contamination	The minimum pollution level is ISO4406 level 18/16/13, and level 15/13/11 is recommended to prolong the service life

Performance (Cartridge Only)

32cSt/150 sus oil at 40°C



Dimensions

(Dimensions in mm)

