



2.6

30SD08-23 TYPE

Solenoid Directional Valve

Rated pressure (bar / psi)	207 / 3000
Peak flow (L/min / gpm)	30.2 / 8 (See performance chart)

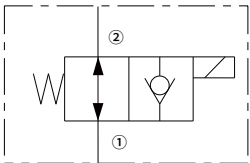
Features

- Continuous-duty rated coil
- Both ports may be fully pressurized
- Efficient wet-armature construction
- Cartridges are voltage interchangeable
- Optional waterproof E-Coils rated up to IP69K
- Industry common cavity
- Hardened parts for long life and low leakage

Contents

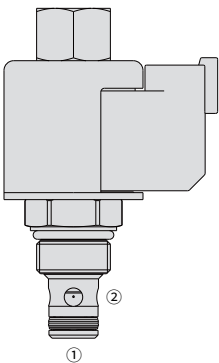
Description	02
Operation	02
Ordering code	02
Materials	02
Technical data	03
Performance	03
Dimensions	04

Symbol



Description

A solenoid-operated, 2-way, normally open, piloted poppet-type, screw-in hydraulic cartridge valve, intended to act as a blocking or load-holding device for low flow circuits.



Operation

When de-energized, the 30SD08-23 poppet lifts to open flow from ② to ①. Flow is also open from ① to ②.

When energized, the cartridge acts as a check valve, allowing flow from ① to ②, while blocking flow from ② to ① after overcoming the solenoid force (requires 3.4 to 10.3 bar / 50 to 150 psi).

Ordering Code

30SD08-23					
Option: None Blank 0 N P V 00 10 12 20 24 ER EL DS DG DL					
Porting: Cartridge Only					
Seals: Buna N (Std.) Polyurethane Fluorocarbon					
Voltage Std. Coil: Less Coil 10VDC 12VDC 20VDC 24VDC					
Termination (VDC) E-Coil: Deutsch DT04-2P (IP69K Rated) Lead wires (2) (IP69K Rated)					
Termination (VDC) D-Coil: Dual Spades (SAE J858a, IP65K Rated) DIN 43650 (IP65K Rated) Lead wires (2) (IP65K Rated)					

Materials

Cartridge:

Weight: 0.13kg; Steel with hardened work surfaces. Zinc-plated exposed surfaces; Buna N (Std.) seal.

Standard Ported Body:

Anodized high-strength aluminum alloy, rated to 240 bar; Ductile iron and steel bodies available; Dimensions may differ, consult factory.

Standard Coil: Consult factory.

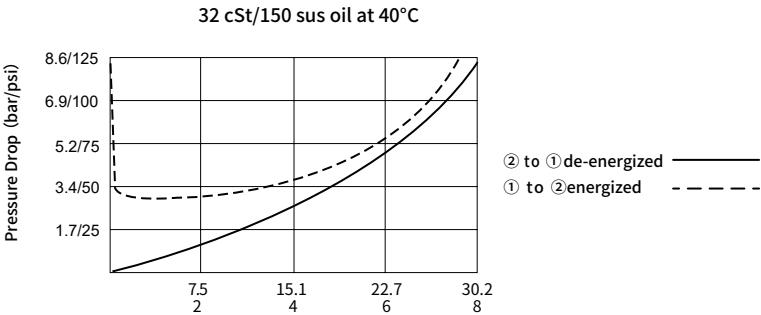
E-Coil:

Weight: 0.14 kg; Perfect wound, fully encapsulated with rugged external metal shell; Rated up to IP69K with Deutsch sockets.

Technical Data

Rated pressure		207 bar (3000 psi)
Peak flow		30.2 L/min (8 gpm)
Internal leakage		≤ 0.15 mL/min (3 drops/min) @207 bar
Coil duty rating		Continuous from 85% to 115% of nominal voltage
Initial coil current draw at 20°C	E-Coil	1.4 A at 12VDC; 0.7 A at 24VDC
	D-Coil	1.2 A at 12VDC; 0.6 A at 24VDC
Minimum pull-in voltage		85% of nominal at 207 bar
Cavity		VC08-2 (See technical reference)
Fluid		Mineral-based or synthetics with lubricating properties
Viscosity range		7.4 to 420 mm ² /s
Temperature range	-40 to 100 °C (Buna N seals)	
	-54 to 107 °C (Polyurethane seals)	
	-26 to 204 °C (Fluorocarbon seals)	
Degree of fluid contamination		The minimum pollution level is ISO4406 level 20/18/14, and level 17/15/13 is recommended to prolong the service life

Performance (Cartridge Only)



Dimensions

01

