



4.2.3

**SDCV-04 TYPE**  
**ELECTRIC ON-OFF VALVE**

Size	04
Rated pressure(bar)	50
Rated flow(L/min)	10

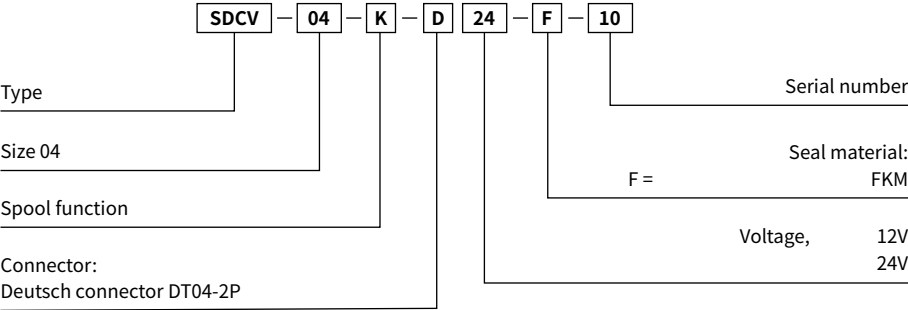


04

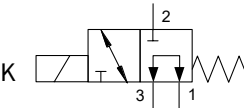
Contents

	Page
Ordering code	03
Symbol	03
Description	04
Operation	04
Features	04
Technical data	05
Characteristic curves	06
Unit dimensions	07
Cavity dimensions	08

Ordering code



Symbol:



## Description

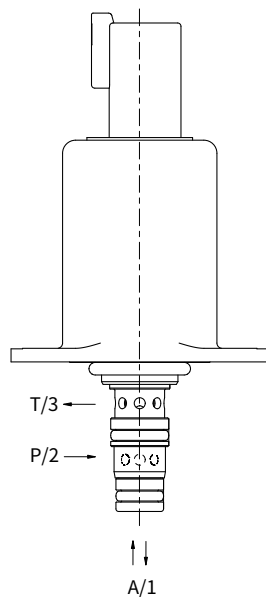
Direct-acting control, cartridge structure, suitable for a special design of mobile machinery.

## Operation

The SDCV-04 solenoid on-off valve is an electromagnet-operated reversing slide valve, which is used to control the flow direction of the oil.

When the solenoid on-off valve works, the solenoid coil is energized by the external power supply, and the wet electromagnet generates a thrust force, which pushed the valve core through the push rod to achieve reversal so as to realize the purpose of controlling the flow of the oil.

When the electromagnet is de-energized, the valve core is pushed to the initial position by the return spring.



## Features

- Quick response
- Compact size
- Oil-immersed DC solenoid

## Technical data

### General

Weight	0.203kg
Mounting position (recommended)	Optional, valve sleeve vertically downward
MTTF <sub>d</sub> - value	150 years
Fluid temperature range	-30 to 80°C

### Hydraulic

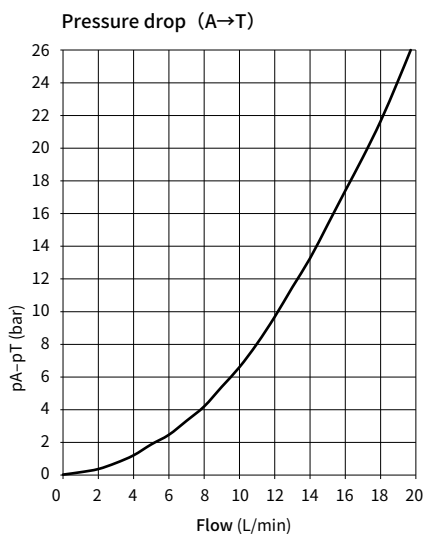
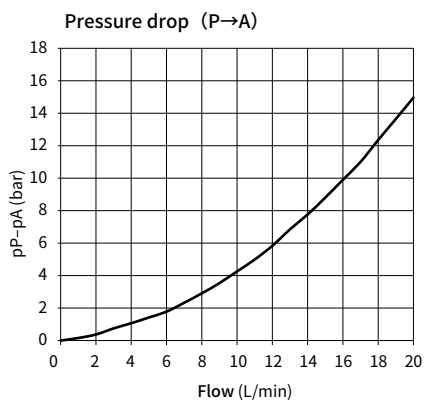
Max. pressure pump	$P_p = 50\text{bar}$
Max. pressure tank	$P_T = 30\text{bar}$
Maximum permitted degree of the contamination of hydraulic fluid cleanliness class	NAS1638 Class 9 and ISO4406 Class 20/18/15
Hydraulic fluid	Mineral oil according to DIN 51524
Hydraulic fluid temperature range	-30 to 105°C
Leakage	< 100mL/min ( de-energized )
	< 100mL/min ( energized )
Filterscreen size	200μm ( Port P )

### Electrical

Operating voltage (amplifier)	12 V	24 V
Resistance at 20° C	9 Ω	34 Ω
Connector	Deutsch Connector DT04-2P	
Protection Class	IP6K6/IPX9K	
Response time	$t_{on} < 60\text{ms}$	
	$t_{off} < 100\text{ms}$	

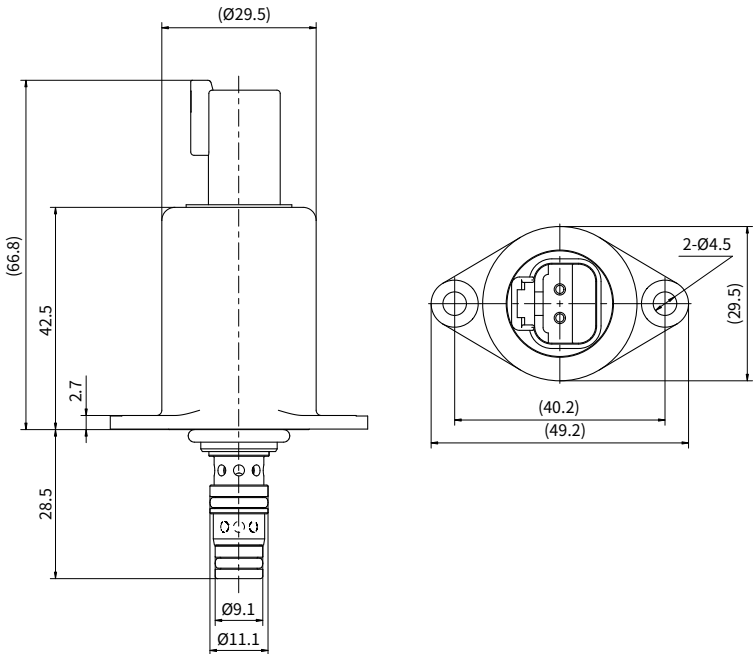
## Characteristic curves (using HLP46, T=50°C )

### • Flow characteristics



Unit dimensions

( dimensions in mm )









**China**

+86 400 101 8889

**America**

+01 630 995 3674

**Germany**

+49 (30) 72088-0

**Japan**

+81 03 6809 1696



© This brochure can be reproduced, edited, reproduced or transmitted electronically without the authorization of Hengli Hydraulic Company. Due to the continuous development of the product, the information in this brochure is not specific to the specific conditions or applicability of the industry, thus, Hengli does not take any responsibility for any incomplete or inaccurate description.