

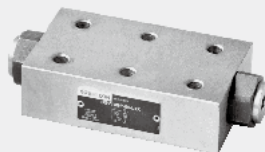


1.10

Pilot Operated Check Valve

Type DSV10...L1X

Size 10
Up to 350bar
Up to 50 L/min



Contents

Function and configurations	02
Ordering code	02
Characteristic curves	02
Symbols	02
Technical data	03
Unit dimensions	03

Features

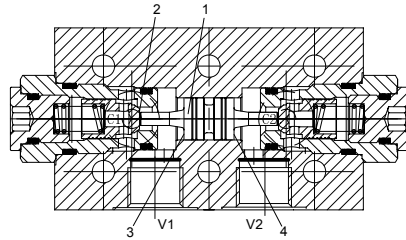
- Sub-plate mounting
- Double operating ports with leakage-free closure
- Stable cracking pressure

Function and symbols

Check valve type DSV is made up of two pilot operated check valves with excellent closure.

Usually fluid can flow free from V1 to C1 or from V2 to C2 with leakage-free closure in the opposite direction.

When fluid flows from C1 to V1, pressure from V2 pushes the piston (1) to move left and pushes the poppet (2) off the seat to realize reverse flow. In order to make the reliable closure of the poppets, the ports V1 and V2 must be connected to tank when the directional valve is in the central position.



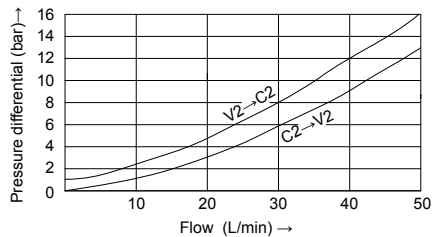
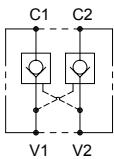
- 1 Piston
- 2 Check valve poppet
- 3 Area A1
- 4 Area A2

Ordering code

DSV	10	GP	80	L1X /	*	
Check valve pilot operated						Further details in clear text
Nominal size = 10						No code = NBR seals V = FKM seals
Inlet threaded connection, Outlet sub-plate mounting = GP						L1X = Series L10 to L19 (L10 to L19: unchanged installation and connection dimensions)
		80=				Cracking pressure 8bar

Characteristic curves (Measured at $\vartheta_{oil}=40^{\circ}\text{C} \pm 5^{\circ}\text{C}$, using HLP46)

Symbol

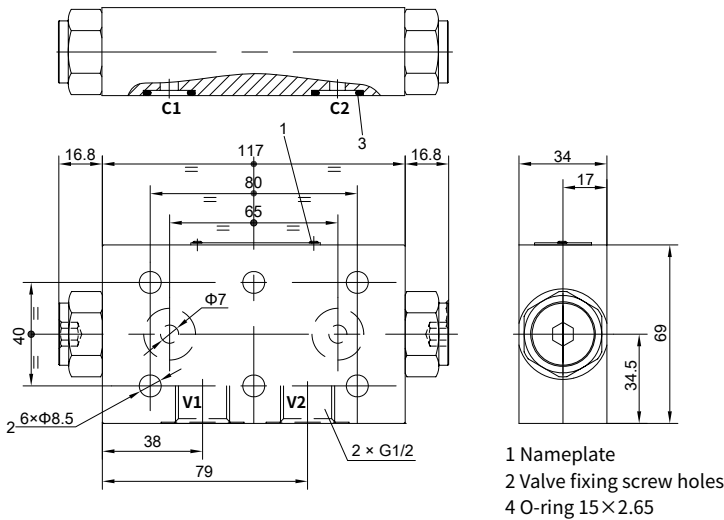


Technical data

Weight	kg	2.24
Max. operating pressure	bar	350
Max. cracking pressure	bar	8
Max. flow-rate	L/min	50
Flow direction		See the symbols
Free flow cracking pressure	bar	See the characteristic curve
Area ratio		A1:A2=3.2:1
Fluid temperature range	°C	-30 to +80 (NBR seal) -20 to +80 (FKM seal)
Fluid		Mineral oil suitable for NBR and FKM seal Phosphate ester for FKM seal
Degree of contamination		Maximum permissible degree of fluid contamination: Class 9. NAS 1638 or 20/18/15, ISO4406

Unit dimensions

(Dimensions in mm)



Valve fixing screws:

Internal hexagon screw

GB/T 70.1- M8 x 50-10.9, Tightening torque $M_A = 37 \text{ Nm}$

China

+86 400 101 8889

America

+01 630 995 3674

Germany

+49 172 3683463

Japan

+81 03 6809 1696



© This brochure can be reproduced, edited, reproduced or transmitted electronically without the authorization of Hengli Hydraulic Company. Due to the continuous development of the product, the information in this brochure is not specific to the specific conditions or applicability of the industry, thus, Hengli does not take any responsibility for any incomplete or inaccurate description.