

1.15

# Shuttle valve

## Type KSF...L1X

Sizes 6 and 10  
Up to 350bar  
Up to 60 L/min



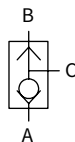
### Contents

Ordering code	02
Technical data	02
Installation dimensions	03

### Features

- For the leakage-free closure
- Cartridge structure for installation in manifolds

### Symbol



## Ordering code



Shuttle valve

Size 6 = 6  
 Size 10 = 10

Further details in clear text

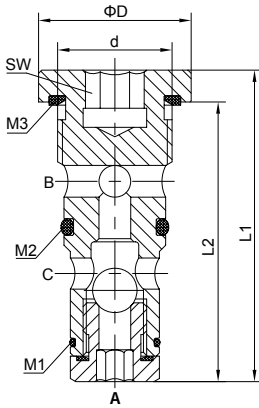
No code = NBR seals  
 V = FKM seals

L1X= Series L10 to L19  
 (L10 to L19: unchanged installation and connection dimensions)

## Technical data

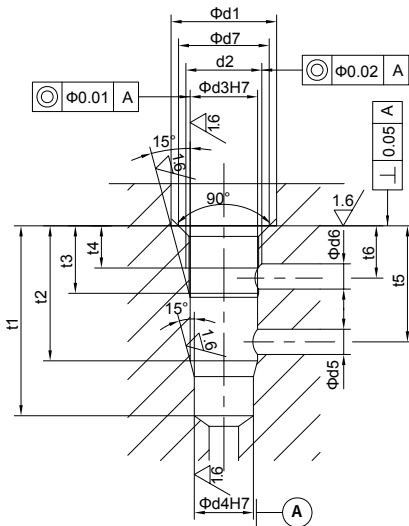
Size	NG6	NG10
Fluid temperature range °C	-30 to +80 (NBR seal)	
	-20 to +80 (FKM seal)	
Viscosity range mm <sup>2</sup> /s	Recommendation 30~80, permission 20~380	
Max.operating pressure bar	350	
Max.flow-rate L/min	40	60
Weight kg	0.5	0.8
Fluid	Mineral oil suit for NBR and FKM seal	
	Phosphate ester for FKM seal	
Degree of contamination	Maximum permissible degree of fluid contamination: Class 9. NAS 1638 or 20/18/15, ISO4406	

## Installation dimensions



Size	NG6	NG10
D	24	34
L1	50	74
d	M18×1.5	M24×1.5
L2	45	66
SW	8	12
M1	O-ring 12×1	O-ring 17×1.5
M2	O-ring 12×2	O-ring 17.3×2.4
M3	Pipe connection gasket M18×1.5	Pipe connection gasket M24×1.5

### Dimensions of inserted hole



Size	NG6	NG10
d1	25	35
d2	M18×1.5	M24×1.5
d3	16	22
d4	14	20
d5	6max	9max
d6	6max	9max
t1	46	68
t2	32	51
t3	16	20
t4	10	15
t5	27.5	40
t6	12	13.5
d7	Φ18 <sup>+0.2</sup> <sub>0</sub>	Φ24 <sup>+0.2</sup> <sub>0</sub>

**China**

+86 400 101 8889

**America**

+01 630 995 3674

**Germany**

+49 172 3683463

**Japan**

+81 03 6809 1696



© This brochure can be reproduced, edited, reproduced or transmitted electronically without the authorization of Hengli Hydraulic Company. Due to the continuous development of the product, the information in this brochure is not specific to the specific conditions or applicability of the industry, thus, Hengli does not take any responsibility for any incomplete or inaccurate description.