



2.6

# 30SD08-25 TYPE

## Solenoid Directional Valve

Rated pressure (bar / psi) 207 / 3000

Peak flow (L/min / gpm) 9.5 / 2.5

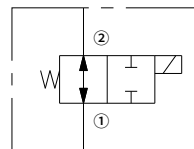
### Features

- Continuous-duty rated coil
- Both ports may be fully pressurized
- Efficient wet-armature construction
- Cartridges are voltage interchangeable
- Optional waterproof E-Coils rated up to IP69K
- Industry common cavity
- Hardened parts for long life and low leakage

### Contents

Description	02
Operation	02
Ordering code	02
Materials	02
Technical data	03
Performance	03
Dimensions	04

### Symbol

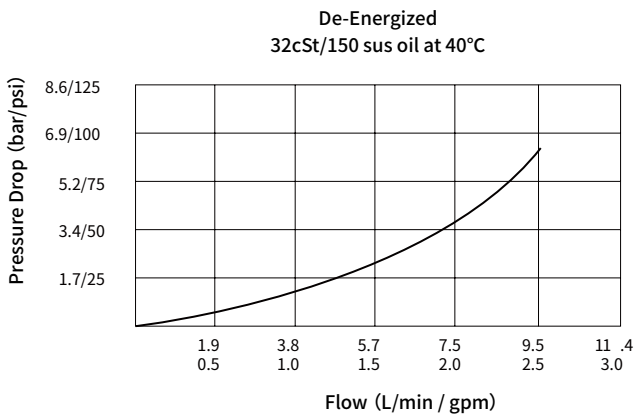




## Technical Data

Rated pressure	207 bar (3000 psi)	
Peak flow	9.5 L/min (2.5 gpm)	
Internal leakage	≤ 82 mL/min @207 bar	
Coil duty rating	Continuous from 85% to 115% of nominal voltage	
Initial coil current draw at 20°C	E-Coil	1.4 A at 12VDC; 0.7 A at 24VDC
	D-Coil	1.2 A at 12VDC; 0.6 A at 24VDC
Minimum pull-in voltage	85% of nominal at 207 bar	
Cavity	VC08-2 (See technical reference)	
Fluid	Mineral-based or synthetics with lubricating properties	
Viscosity range	7.4 to 420 mm <sup>2</sup> /s	
Temperature range	-40 to 100 °C (Buna N seals)	
	-54 to 107 °C (Polyurethane seals)	
	-26 to 204 °C (Fluorocarbon seals)	
Degree of fluid contamination	The minimum pollution level is ISO4406 level 20/18/14, and level 17/15/13 is recommended to prolong the service life	

## Performance (Cartridge Only)



## Dimensions

( Dimensions in mm )

