



2.8

# 30SD08-30 TYPE

## Solenoid Directional Valve

Rated pressure (bar / psi)	207 / 3000
Peak flow (L/min / gpm)	11.4 / 3 (See performance chart)

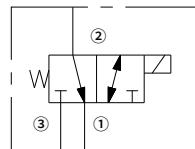
### Features

- Continuous-duty rated coil
- Efficient wet-armature construction
- Cartridges are voltage interchangeable
- Optional waterproof E-Coils rated up to IP69K
- Hardened parts for long life

### Contents

Description	02
Operation	02
Ordering code	02
Materials	02
Technical data	03
Performance	03
Dimensions	04

### Symbol



## Description

A solenoid-operated, 3-way, direct-acting, spool-type, screw-in hydraulic directional valve.

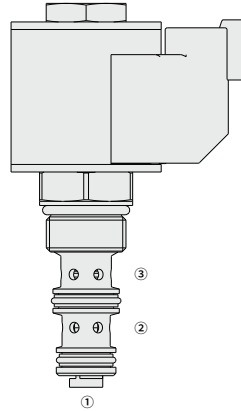
01

## Operation

When de-energized, the valve allows flow from ② to ①, while blocking flow at ③.

When energized, the cartridge's spool shifts to open from ③ to ②, while blocking flow out ①.

While port ① may be fully pressurized, it is not intended to be used as the inlet.



## Ordering Code

	30SD08-30	-	-	-	-	-	-	-	-
<b>Option:</b>	Blank								
None									
<b>Cartridge only</b>	0								
<b>Seals:</b>									
Polyurethane (Std.)				P					
Buna N				N					
Fluorocarbon				V					
<b>Voltage</b>									
<b>Std. Coil:</b>									
Less Coil					00				
10VDC					10				
12VDC					12				
20VDC					20				
24VDC					24				
<b>Termination (VDC)</b>									
<b>E-Coil:</b>									
Deutsch DT04-2P									ER
(IP69K Rated)									
Lead wires (2)									EL
(IP69K Rated)									
<b>Termination (VDC)</b>									
<b>D-Coil:</b>									
Dual Spades									DS
(SAE J858a, IP65K Rated)									
DIN 43650									DG
(IP65K Rated)									
Lead wires (2)									DL
(IP65K Rated)									

## Materials

### Cartridge:

Weight: 0.11 kg; Steel with hardened work surfaces. Zinc-plated exposed surfaces; Polyurethane (Std.) seal.

### Standard Ported Body:

Anodized high-strength aluminum alloy, rated to 240 bar; Ductile iron and steel bodies available; Dimensions may differ, consult factory.

**Standard Coil:** Consult factory.

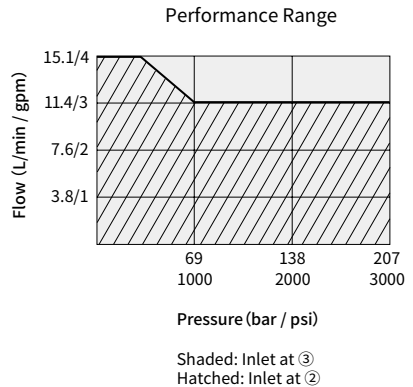
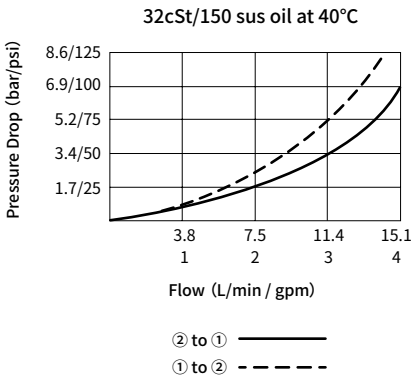
### E-Coil:

Weight: 0.14 kg; Perfect wound, fully encapsulated with rugged external metal shell; Rated up to IP69K with Deutsch sockets.

## Technical Data

Rated pressure	207 bar (3000 psi)	
Peak flow	See performance chart	
Internal leakage	Port 3 (De-energized): ≤ 82 mL/min@207 bar	
	Port 1 (Energized): ≤ 164 mL/min@207 bar	
Coil duty rating	Continuous from 85% to 115% of nominal voltage	
Initial coil current draw at 20°C	E-Coil	1.4 A at 12VDC; 0.7 A at 24VDC
	D-Coil	1.2 A at 12VDC; 0.6 A at 24VDC
Minimum pull-in voltage	85% of nominal at 207 bar	
Cavity	VC08-3 (Cavity variation 'A', see technical reference)	
Fluid	Mineral-based or synthetics with lubricating properties	
Viscosity range	7.4 to 420 mm <sup>2</sup> /s	
Temperature range	-54 to 107 °C (Polyurethane seals)	
	-40 to 100 °C (Buna N seals)	
	-26 to 204 °C (Fluorocarbon seals)	
Degree of fluid contamination	The minimum pollution level is ISO4406 level 20/18/14, and level 17/15/13 is recommended to prolong the service life	

## Performance (Cartridge Only)



# Dimensions

(Dimensions in mm)

