



2.20

30SD10-23 TYPE

Solenoid Directional Valve

Rated pressure (bar / psi) 207 / 3000
 Peak flow (L/min / gpm) 68.1 / 18 (See performance chart)

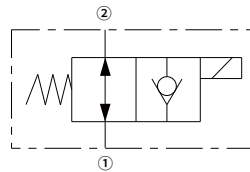
Features

- Continuous-duty rated coil
- Efficient wet-armature construction
- Cartridges are voltage interchangeable
- Optional waterproof E-Coils rated up to IP69K
- Industry common cavity
- Hardened parts for long life and low leakage

Contents

Description	02
Operation	02
Ordering code	02
Materials	02
Technical data	03
Performance	03
Dimensions	04

Symbol

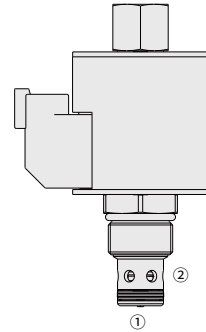


Description

A solenoid-operated, two-way, poppet-type, normally open, screw-in, hydraulic cartridge valve.

Operation

When de-energized, the 30SD10-23 allows bidirectional flow from ② to ①. When energized, the valve's poppet closes to block flow from ② to ①. In this mode, the cartridge allows free reverse flow from ① to ② after overcoming the solenoid force (requires 3.4 to 10.3 bar / 50 to 150 psi).



Ordering Code

	30SD10-23	-	-	-	-	-	-	-	-
Option:	Blank								
Cartridge only	0								
Seals:	Buna N (Std.)	N							
	Polyurethane	P							
	Fluorocarbon	V							
Voltage Std. Coil:	Less Coil	00							
	10VDC	10							
	12VDC	12							
	20VDC	20							
	24VDC	24							
Termination (VDC)	E-Coil:								
	Amp Junior Timer	EJ							
	(IP67 Rated)								
	Deutsch DT04-2P	ER							
	(IP69K Rated)								
	DIN 43650	EG							
	(IP65 Rated)								
Termination (VDC)	D-Coil:								
	Dual Spades	DS							
	(SAE J858a, IP65K Rated)								

Materials

Cartridge:

Weight: 0.2 kg ; Steel with hardened work surfaces. Zinc-plated exposed surfaces; Buna N (Std.) seal.

Standard Ported Body:

Anodized high-strength aluminum alloy, rated to 240 bar; Ductile iron and steel bodies available; Dimensions may differ, consult factory.

Standard Coil: Consult factory.

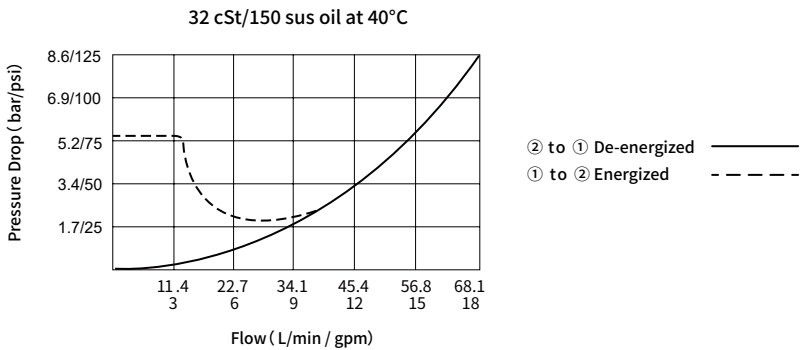
E-Coil:

Weight: 0.41 kg ; Perfect wound, fully encapsulated with rugged external metal shell; Rated up to IP69K with Deutsch sockets.

Technical Data

Rated pressure	207 bar (3000 psi)	
Peak flow	See performance chart	
Internal leakage	≤ 0.15 mL/min (3 drops/min) @ 207 bar	
Coil duty rating	Continuous from 85% to 115% of nominal voltage	
Initial coil current draw at 20°C	E-Coil	1.7 A at 12VDC; 0.85 A at 24VDC
	D-Coil	1.67 A at 12VDC; 0.83 A at 24VDC
Minimum pull-in voltage	85% of nominal at 207 bar	
Cavity	VC10-2 (See technical reference)	
Fluid	Mineral-based or synthetics with lubricating properties	
Viscosity range	7.4 to 420 mm ² /s	
Temperature range	-40 to 100 °C (Buna N seals)	
	-54 to 107 °C (Polyurethane seals)	
	-26 to 204 °C (Fluorocarbon seals)	
Degree of fluid contamination	The minimum pollution level is ISO4406 level 20/18/14, and level 17/15/13 is recommended to prolong the service life	

Performance (Cartridge Only)



Dimensions

